

PENTHOUSE

200

3 Bed, 3 Bath

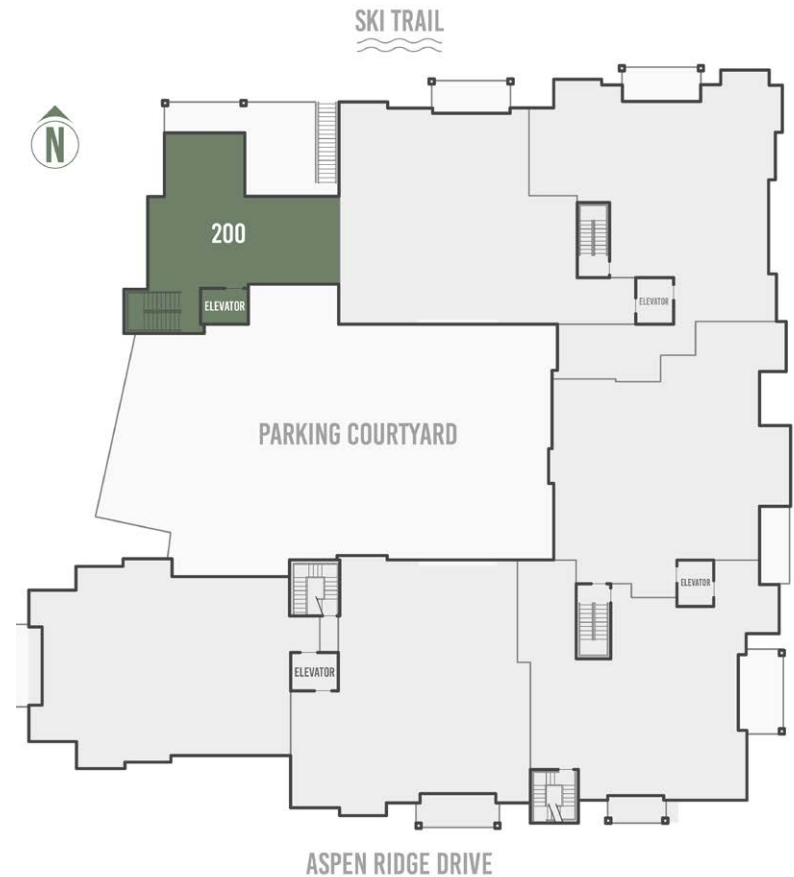
1,978 square feet

- Private residence tower
- Multi-level, penthouse-style floorplan with vaulted ceilings
- Dramatic San Sophia views from living area and all 3 bedrooms
- Direct slopeside location
- Space Theory-designed custom kitchen
- Radiant in-floor heat, air conditioning and in-unit oxygenation systems



98 Aspen Ridge Drive, Mountain Village CO 81435

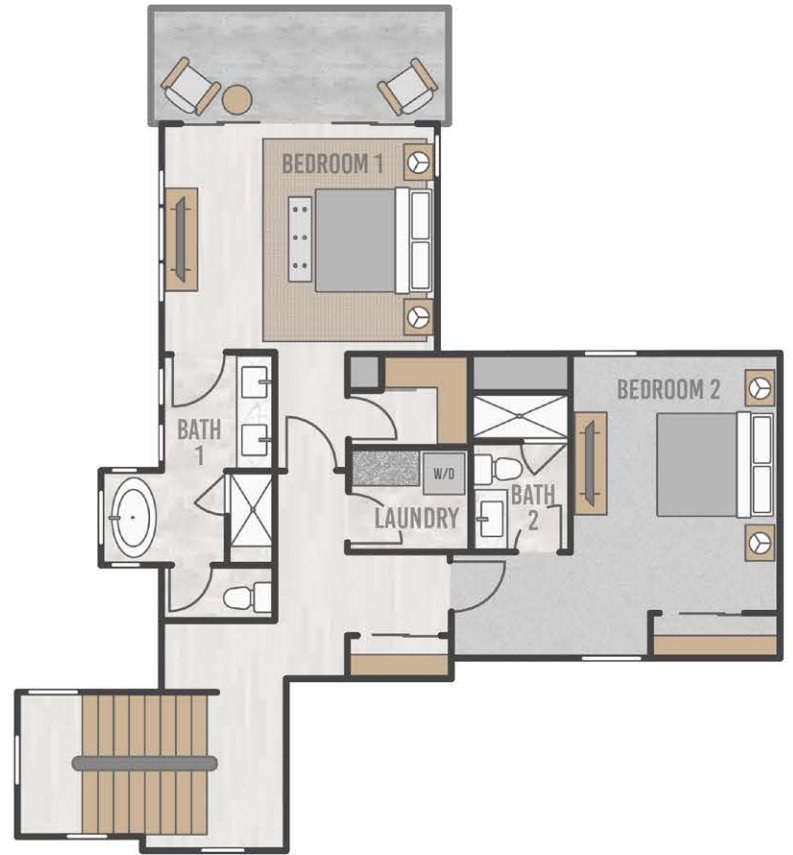
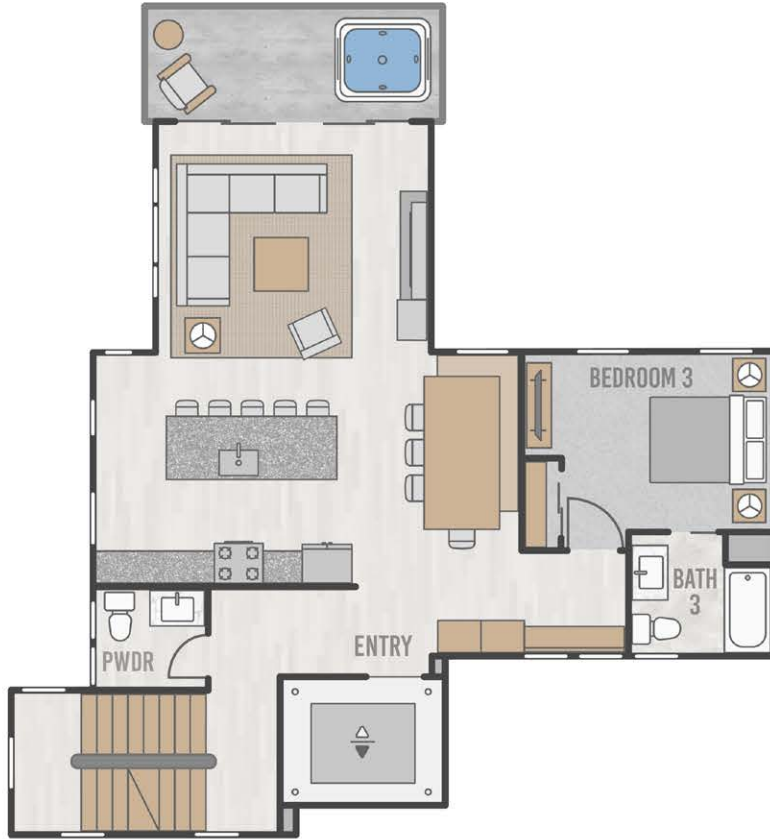
FLOORPLATE



PENTHOUSE 200 FLOORPLAN



THE Highline
RESIDENCES



PENTHOUSE 200



THE Highline
RESIDENCES



NORTH ELEVATION



PENTHOUSE 200 PARKING



IMPORTANT NOTICE: Residence images are artist conceptual renderings intended solely for illustrative purposes and may not accurately represent the details of this specific residence and should not be relied upon, nor do they create an agreement or commitment to deliver the residence in accordance with such illustrations. The specific orientation, views, window configurations, features, ceiling heights and design elements vary from unit to unit and are subject to change. Any square footages listed have been measured to the outside face of the exterior walls and are approximated based on architectural plans, not as built dimensions, and are subject to change. Interested parties are advised to inspect the full project plans and specifications, which contain all the design details of each home; they are available for review upon request. All residences are sold unfurnished - the furniture shown on the floor plan is not included in purchase price. Presented by O'Neill Stetina Group – Telluride Properties.

RESIDENCE

201

3 Bed, 3 Bath

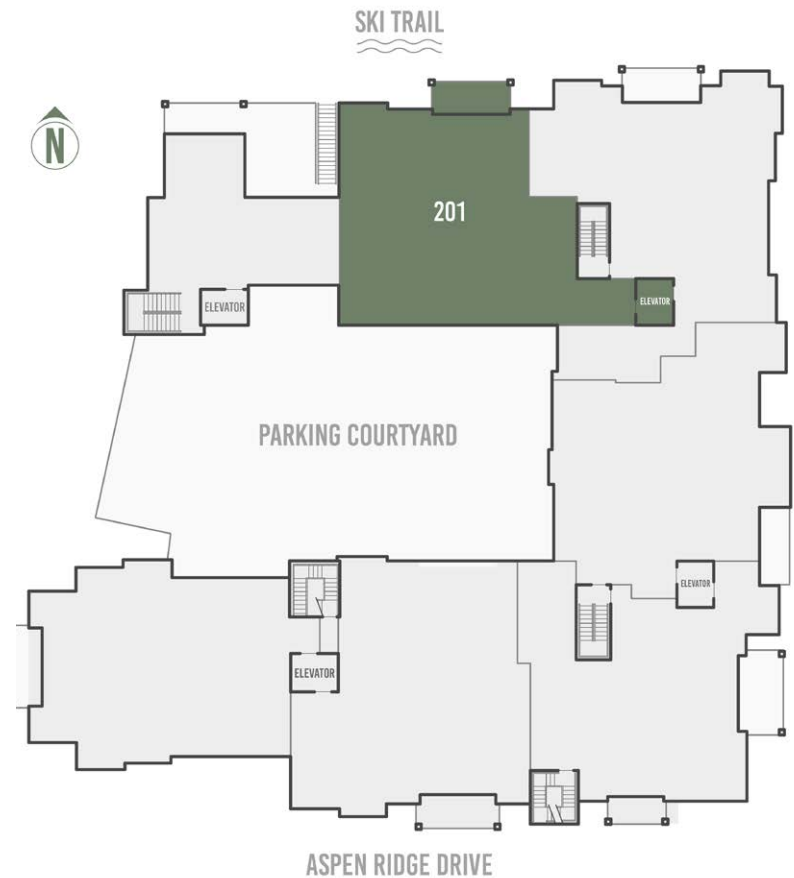
2,113 square feet

- Dramatic San Sophia views from living area and primary suite
- Single-level floorplan with direct elevator access, and direct slopeside location
- Designed for the Telluride lifestyle with urban mudroom and spacious adjacent laundry room
- Generous Master and Guest master suites
- Space Theory-designed custom kitchen
- Radiant in-floor heat, air conditioning and in-unit oxygenation systems



98 Aspen Ridge Drive, Mountain Village CO 81435

FLOORPLATE



RESIDENCE 201 FLOORPLAN



RESIDENCE 201



THE Highline
RESIDENCES



NORTH ELEVATION



RESIDENCE 201 PARKING



IMPORTANT NOTICE: Residence images are artist conceptual renderings intended solely for illustrative purposes and may not accurately represent the details of this specific residence and should not be relied upon, nor do they create an agreement or commitment to deliver the residence in accordance with such illustrations. The specific orientation, views, window configurations, features, ceiling heights and design elements vary from unit to unit and are subject to change. Any square footages listed have been measured to the outside face of the exterior walls and are approximated based on architectural plans, not as built dimensions, and are subject to change. Interested parties are advised to inspect the full project plans and specifications, which contain all the design details of each home; they are available for review upon request. All residences are sold unfurnished - the furniture shown on the floor plan is not included in purchase price. Presented by O'Neill Stetina Group – Telluride Properties.

RESIDENCE

202

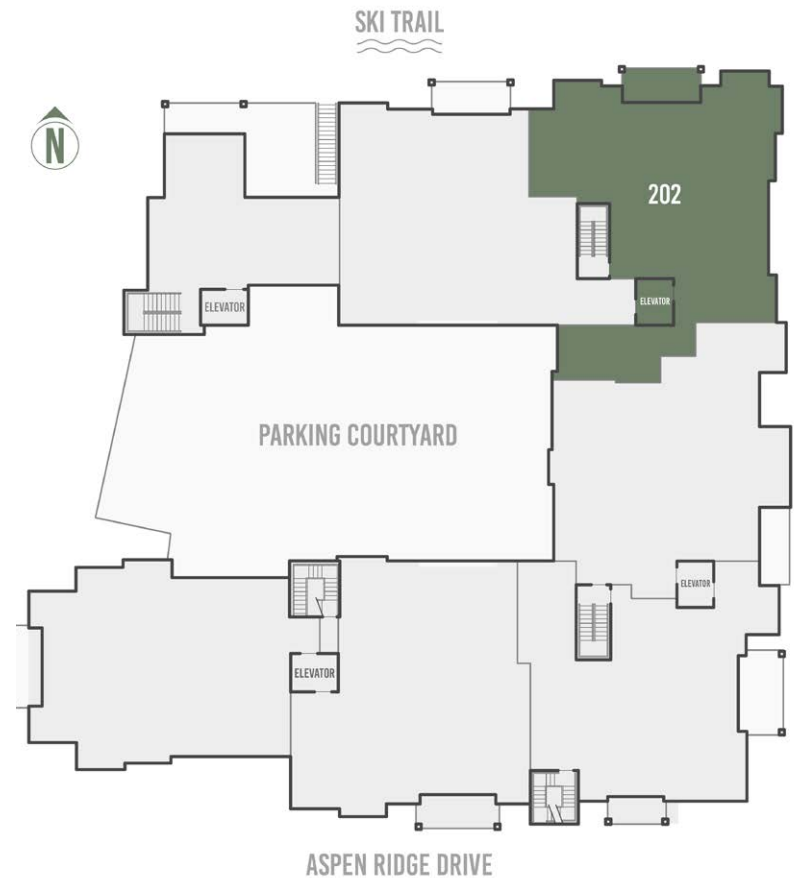
4 Bed, 4 Bath
2,176 square feet

- Corner unit with panoramic San Sophia and ski area views
- Direct slopeside location
- Single-level floorplan with direct elevator access
- Premium master suite with office nook and large walk-in closet
- Space Theory-designed custom kitchen and beverage center
- Radiant in-floor heat, air conditioning and in-unit oxygenation systems



98 Aspen Ridge Drive, Mountain Village CO 81435

FLOORPLATE



RESIDENCE 202 FLOORPLAN



RESIDENCE 202



THE Highline
RESIDENCES



NORTH ELEVATION



EAST ELEVATION



RESIDENCE 202 PARKING



IMPORTANT NOTICE: Residence images are artist conceptual renderings intended solely for illustrative purposes and may not accurately represent the details of this specific residence and should not be relied upon, nor do they create an agreement or commitment to deliver the residence in accordance with such illustrations. The specific orientation, views, window configurations, features, ceiling heights and design elements vary from unit to unit and are subject to change. Any square footages listed have been measured to the outside face of the exterior walls and are approximated based on architectural plans, not as built dimensions, and are subject to change. Interested parties are advised to inspect the full project plans and specifications, which contain all the design details of each home; they are available for review upon request. All residences are sold unfurnished - the furniture shown on the floor plan is not included in purchase price. Presented by O'Neill Stetina Group – Telluride Properties.

RESIDENCE

204

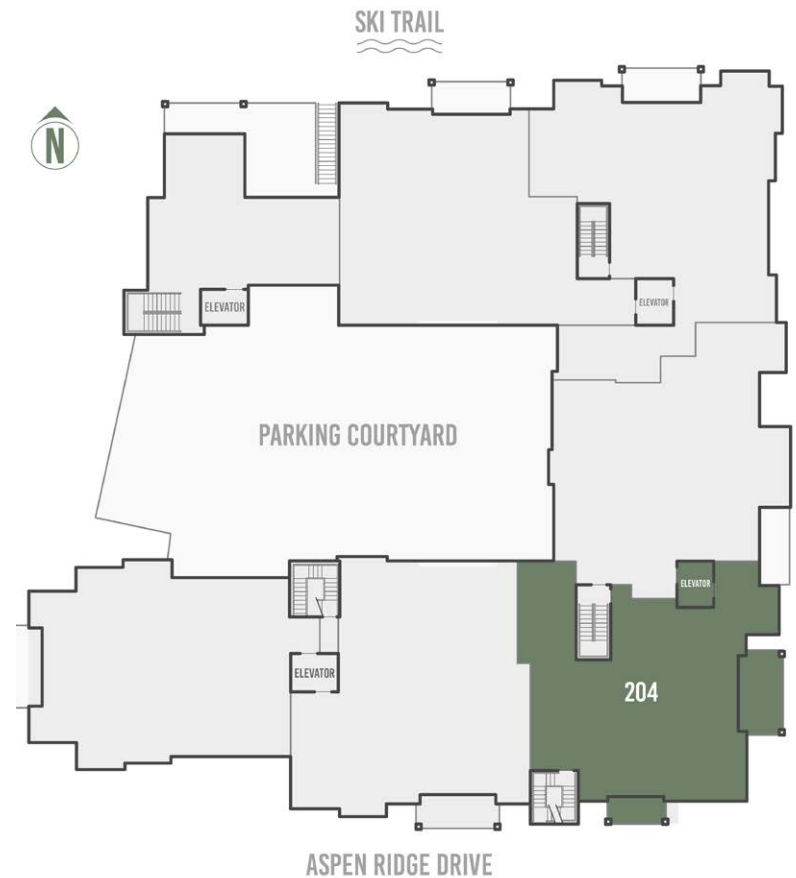
3 Bed, 3 Bath
1,917 square feet

- Corner unit with panoramic views of Mountain Village, ski area and Palmyra Peak
- 3 bedrooms all with private ensuite bathrooms
- Indoor/outdoor livability directly from main living area and additional private balcony attached to the primary owner suite
- Sunny and spacious office/flex space
- Space Theory-designed custom kitchen
- Radiant in-floor heat, air conditioning and in-unit oxygenation systems



98 Aspen Ridge Drive, Mountain Village CO 81435

FLOORPLATE



RESIDENCE 204 FLOORPLAN



RESIDENCE 204



THE Highline
RESIDENCES



EAST ELEVATION



SOUTH ELEVATION



RESIDENCE 204 PARKING



PENTHOUSE

302

5 Bed, 5 Bath

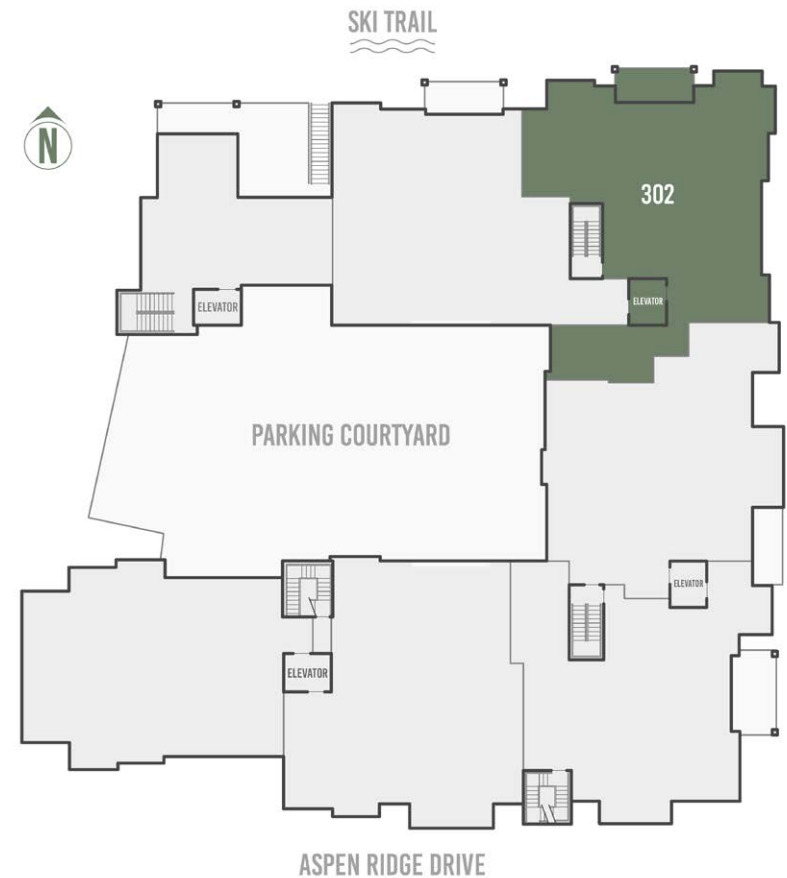
3,202 square feet

- Corner Penthouse with panoramic views of San Sophia Range to ski area
- Bi-level design with top-floor living spaces
- Secondary living area/family room with adjacent slopeside hot tub deck
- Premium primary suite with office nook
- Space Theory-designed custom kitchen and butler's pantry
- Radiant in-floor heat, air conditioning and in-unit oxygenation systems

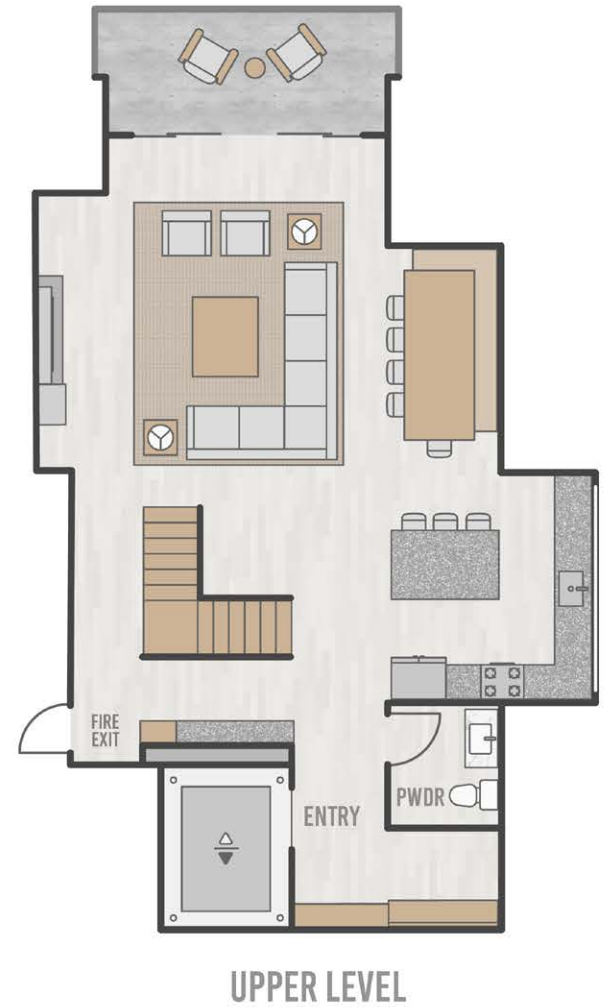
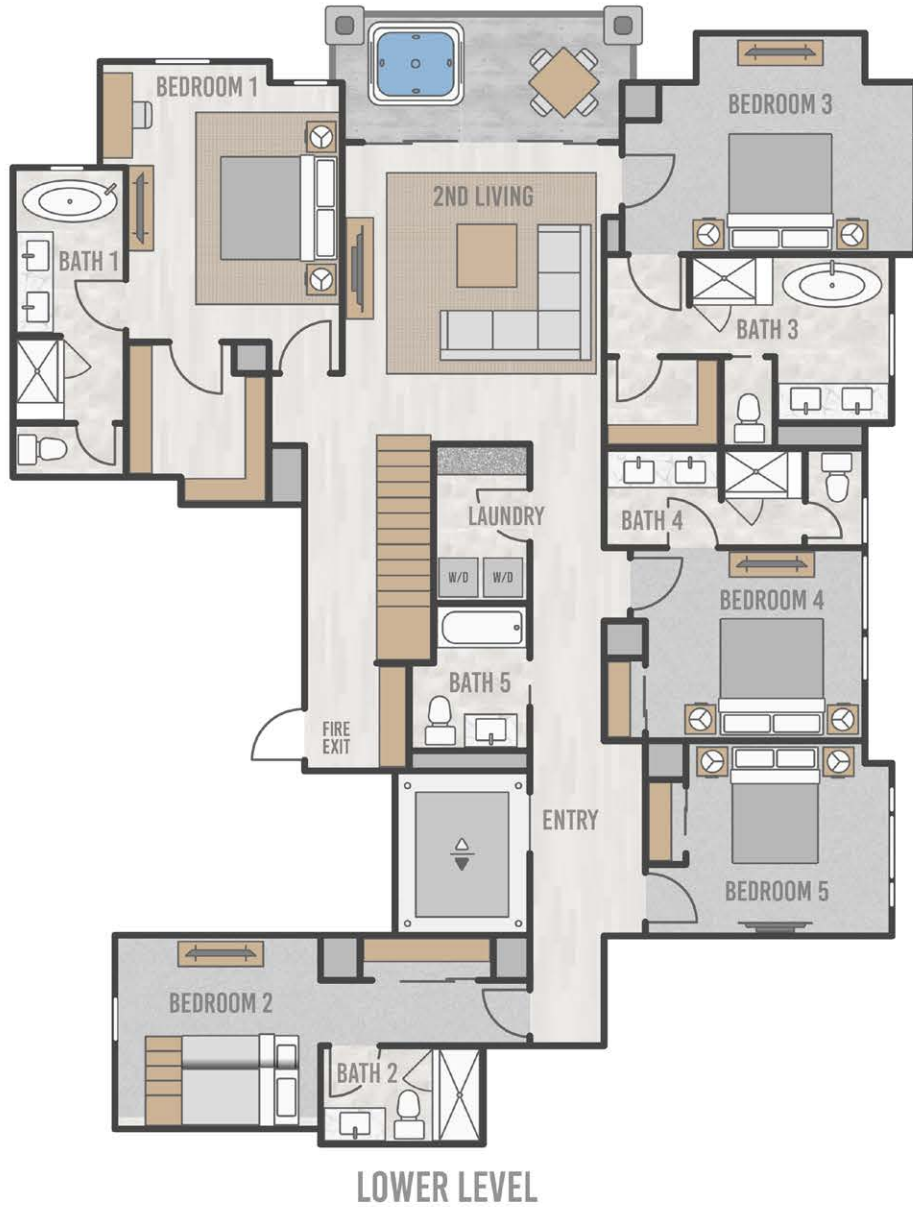


98 Aspen Ridge Drive, Mountain Village CO 81435

FLOORPLATE



PENTHOUSE 302 FLOORPLAN



PENTHOUSE 302



THE *Highline*
RESIDENCES



NORTH ELEVATION



PENTHOUSE 302 PARKING



EAST ELEVATION



IMPORTANT NOTICE: Residence images are artist conceptual renderings intended solely for illustrative purposes and may not accurately represent the details of this specific residence and should not be relied upon, nor do they create an agreement or commitment to deliver the residence in accordance with such illustrations. The specific orientation, views, window configurations, features, ceiling heights and design elements vary from unit to unit and are subject to change. Any square footages listed have been measured to the outside face of the exterior walls and are approximated based on architectural plans, not as built dimensions, and are subject to change. Interested parties are advised to inspect the full project plans and specifications, which contain all the design details of each home; they are available for review upon request. All residences are sold unfurnished - the furniture shown on the floor plan is not included in purchase price. Presented by O'Neill Stetina Group – Telluride Properties.

RESIDENCE

305

4 Bed, 4 Bath

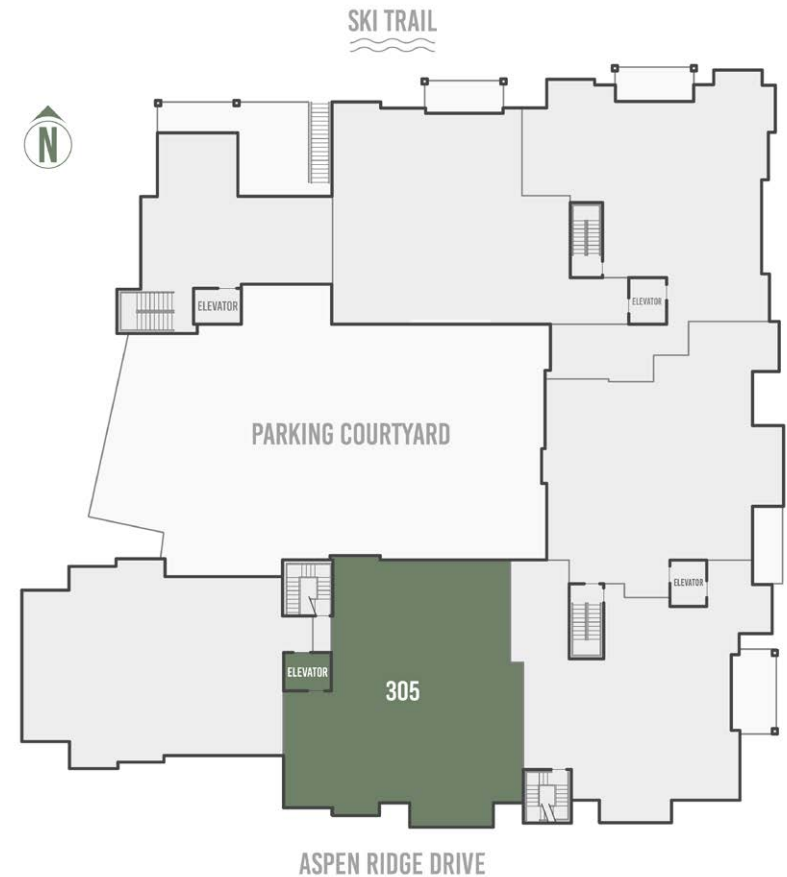
2,138 square feet

- Sunny, southern exposure with Palmyra Peak views
- 4 bedrooms with private, ensuite bathrooms
- Spacious primary bath with standalone tub and walk-in shower
- Urban mudroom design adjacent to stair and unit-direct elevator access
- Space Theory-designed custom kitchen
- Radiant in-floor heat, air conditioning and in-unit oxygenation systems

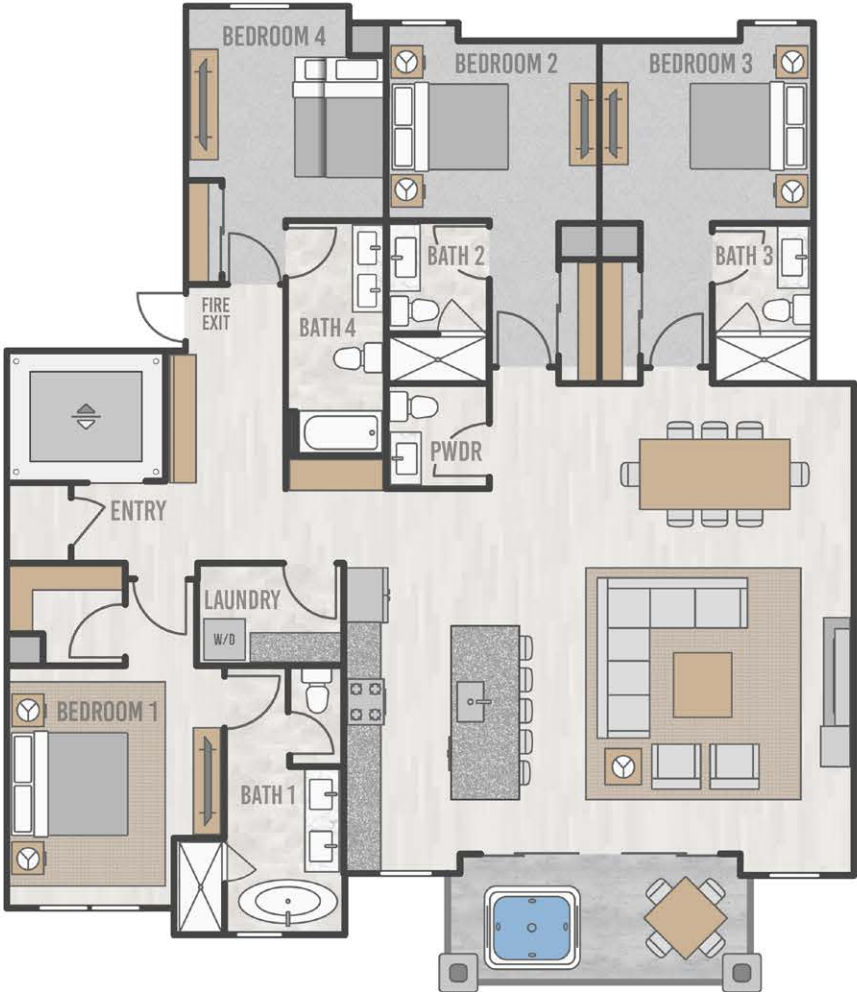


98 Aspen Ridge Drive, Mountain Village CO 81435

FLOORPLATE



RESIDENCE 305 FLOORPLAN



RESIDENCE 305



THE *Highline*
RESIDENCES



SOUTH ELEVATION



RESIDENCE 305 PARKING



IMPORTANT NOTICE: Residence images are artist conceptual renderings intended solely for illustrative purposes and may not accurately represent the details of this specific residence and should not be relied upon, nor do they create an agreement or commitment to deliver the residence in accordance with such illustrations. The specific orientation, views, window configurations, features, ceiling heights and design elements vary from unit to unit and are subject to change. Any square footages listed have been measured to the outside face of the exterior walls and are approximated based on architectural plans, not as built dimensions, and are subject to change. Interested parties are advised to inspect the full project plans and specifications, which contain all the design details of each home; they are available for review upon request. All residences are sold unfurnished - the furniture shown on the floor plan is not included in purchase price. Presented by O'Neill Stetina Group – Telluride Properties.

PENTHOUSE

306

5 Bed, 5 Bath

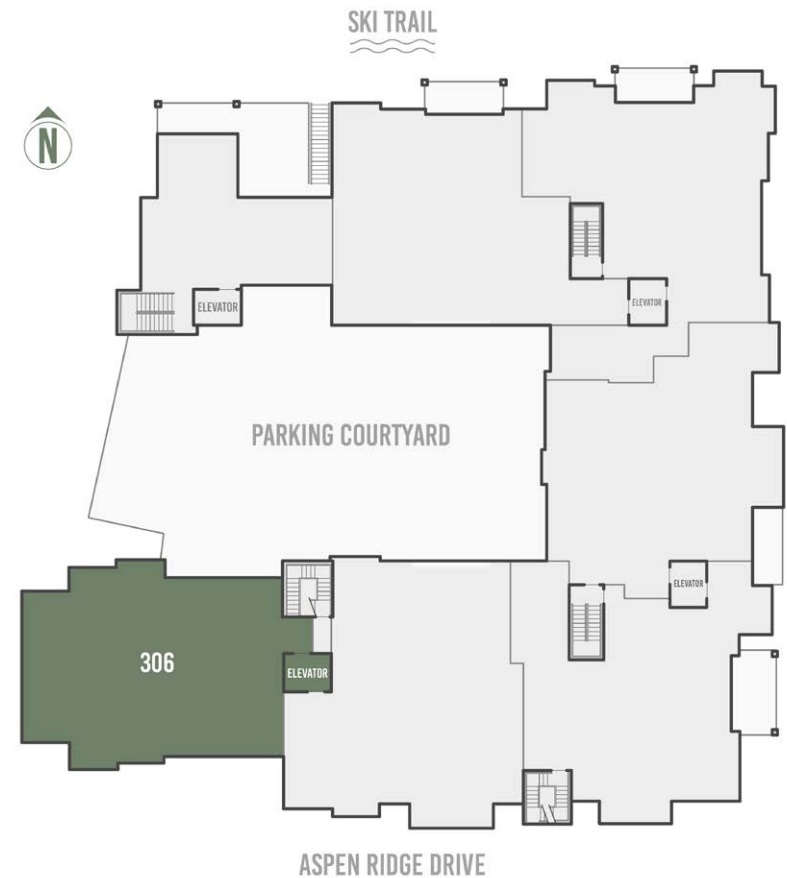
3,551 square feet

- 5-bedroom penthouse with tremendous S-SW-W exposures resulting in exceptional solar gain
- Panoramic views from Palmyra to Wilson to Lone Cone and the La Sals to the West
- Spacious main-floor living areas with additional living/family room on upper floor
- All 5 bedrooms feature private, ensuite bathrooms
- Space Theory-designed custom kitchen and beverage center
- Radiant in-floor heat, air conditioning and in-unit oxygenation systems



98 Aspen Ridge Drive, Mountain Village CO 81435

FLOORPLATE



PENTHOUSE 306 FLOORPLAN



THE *Highline*
RESIDENCES



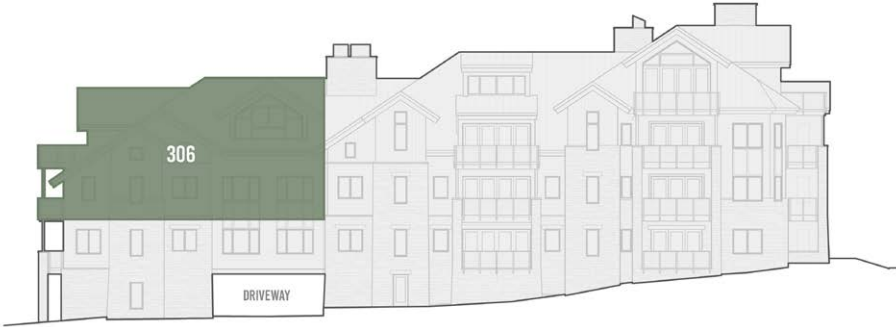
PENTHOUSE 306



THE *Highline*
RESIDENCES



SOUTH ELEVATION



PENTHOUSE 306 PARKING



IMPORTANT NOTICE: Residence images are artist conceptual renderings intended solely for illustrative purposes and may not accurately represent the details of this specific residence and should not be relied upon, nor do they create an agreement or commitment to deliver the residence in accordance with such illustrations. The specific orientation, views, window configurations, features, ceiling heights and design elements vary from unit to unit and are subject to change. Any square footages listed have been measured to the outside face of the exterior walls and are approximated based on architectural plans, not as built dimensions, and are subject to change. Interested parties are advised to inspect the full project plans and specifications, which contain all the design details of each home; they are available for review upon request. All residences are sold unfurnished - the furniture shown on the floor plan is not included in purchase price. Presented by O'Neill Stetina Group - Telluride Properties.

PENTHOUSE

404

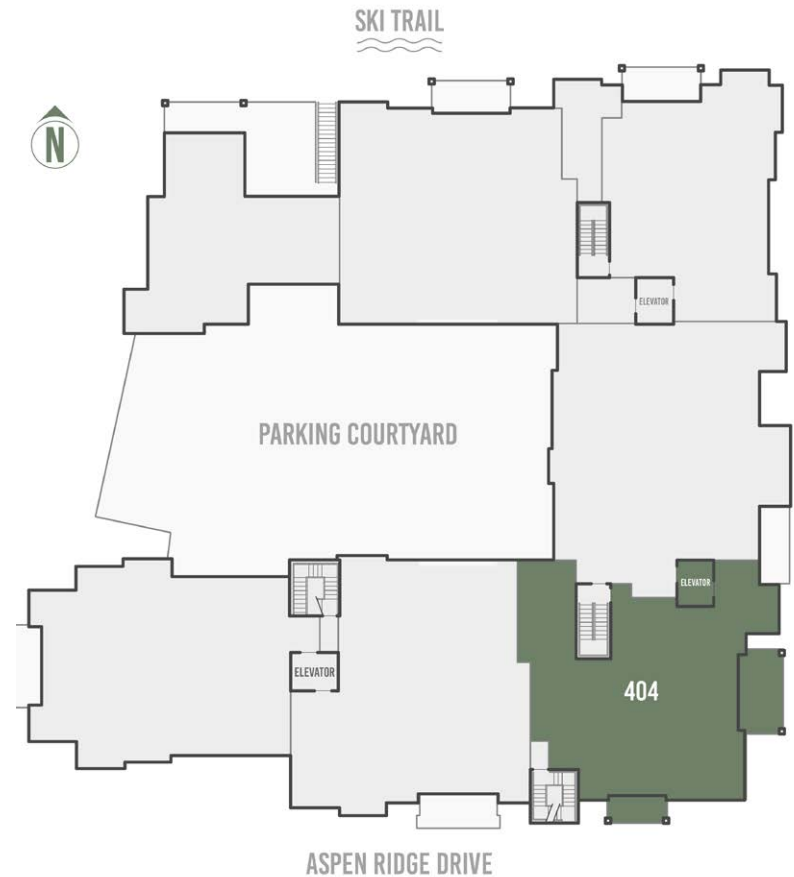
5 Bed, 5 Bath

3,120 square feet

- 5-bedroom corner penthouse with panoramic views from the San Sophia ridge, across Mountain Village and the Telluride Ski Resort to Palmyra Peak
- Top-floor living spaces enjoy unencumbered views and unfiltered sunshine
- Secondary living/family room with hot tub deck
- Sunny and spacious office adjacent to private elevator entrance
- Space Theory-designed custom kitchen and beverage center
- Radiant in-floor heat, air conditioning and in-unit oxygenation systems



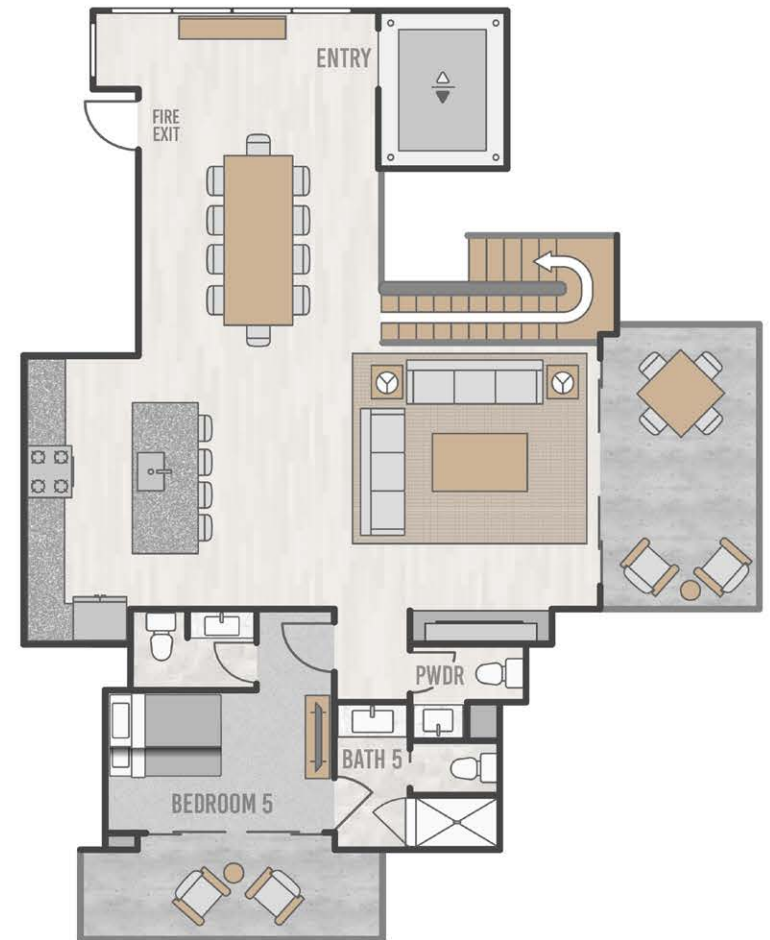
FLOORPLATE



PENTHOUSE 404 FLOORPLAN



LOWER LEVEL



UPPER LEVEL

SOUTH ELEVATION



PENTHOUSE 404 PARKING



IMPORTANT NOTICE: Residence images are artist conceptual renderings intended solely for illustrative purposes and may not accurately represent the details of this specific residence and should not be relied upon, nor do they create an agreement or commitment to deliver the residence in accordance with such illustrations. The specific orientation, views, window configurations, features, ceiling heights and design elements vary from unit to unit and are subject to change. Any square footages listed have been measured to the outside face of the exterior walls and are approximated based on architectural plans, not as built dimensions, and are subject to change. Interested parties are advised to inspect the full project plans and specifications, which contain all the design details of each home; they are available for review upon request. All residences are sold unfurnished - the furniture shown on the floor plan is not included in purchase price. Presented by O'Neill Stetina Group – Telluride Properties.