

RESIDENCE

203

4 Bed, 4 Bath

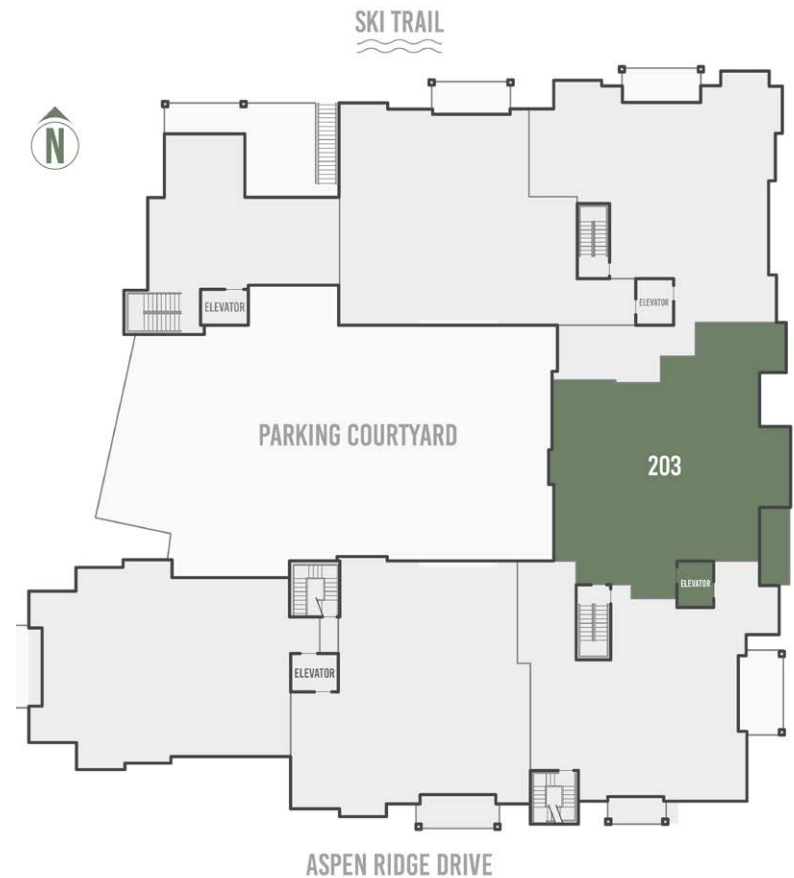
2,051 square feet

- East-facing unit with ski area view and hot tub balcony
- Tremendous floorplan optionality with bunkroom/office or 4th bedroom
- All bedrooms feature private ensuite bathrooms
- Single-level floorplan with direct elevator access
- Space Theory-designed custom kitchen
- Radiant in-floor heat and air conditioning
- Optional owner upgrade for in-unit oxygenation systems



98 Aspen Ridge Drive, Mountain Village CO 81435

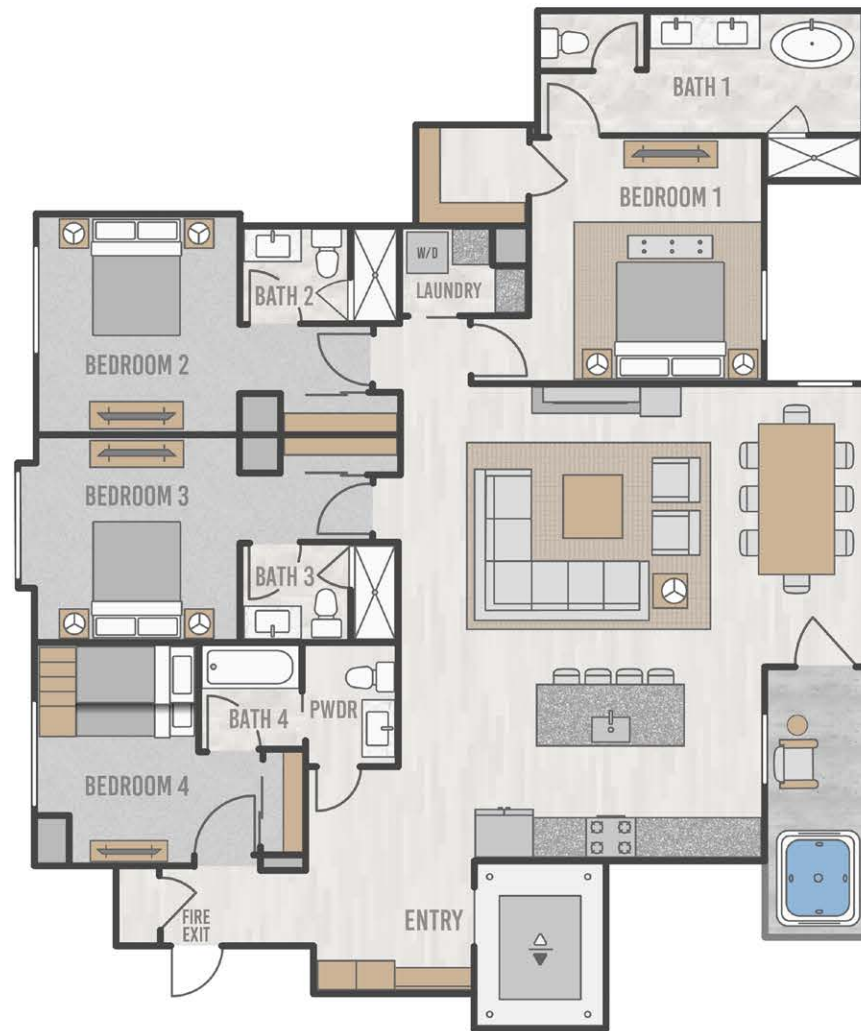
FLOORPLATE



RESIDENCE 203 FLOORPLAN



THE *Highline*
RESIDENCES



RESIDENCE 203



THE *Highline*
RESIDENCES



EAST ELEVATION



RESIDENCE 203 PARKING



PENTHOUSE

303

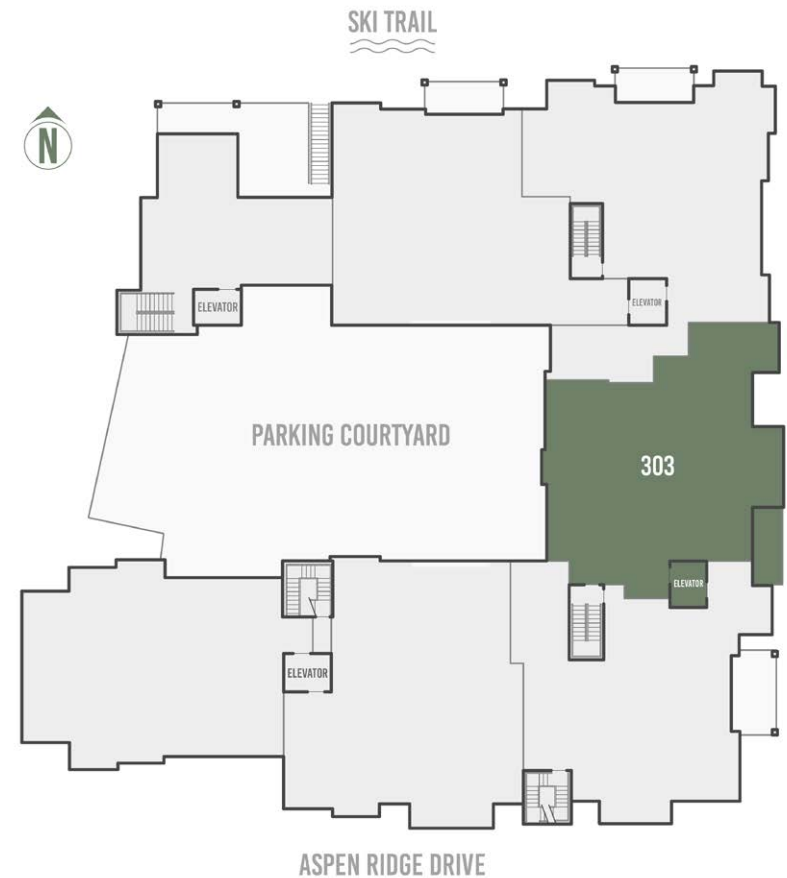
5 Bed, 5 Bath

3,361 square feet

- Penthouse with dramatic ski area views
- Bi-level design with top-floor living spaces
- Secondary living area/family room with adjacent hot tub deck
- Sunny and spacious top-floor office
- Space Theory-designed custom kitchen
- Radiant in-floor heat and air conditioning
- Optional owner upgrade for in-unit oxygenation systems

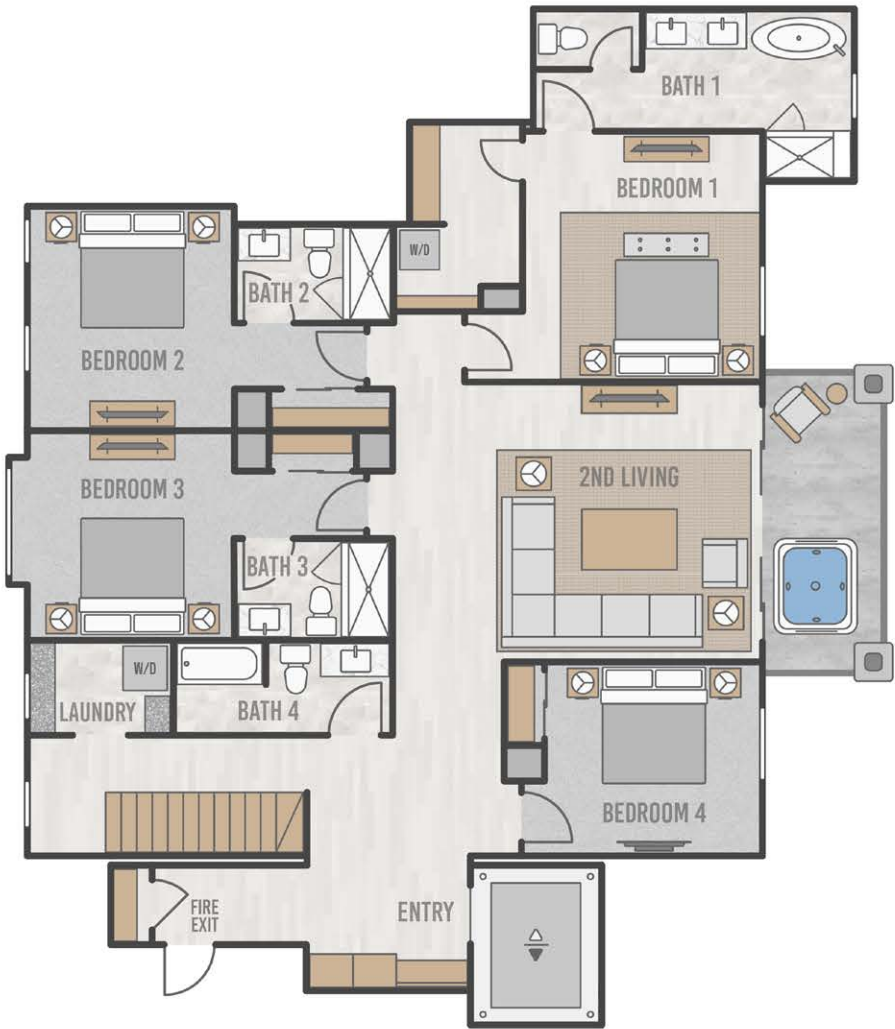


FLOORPLATE

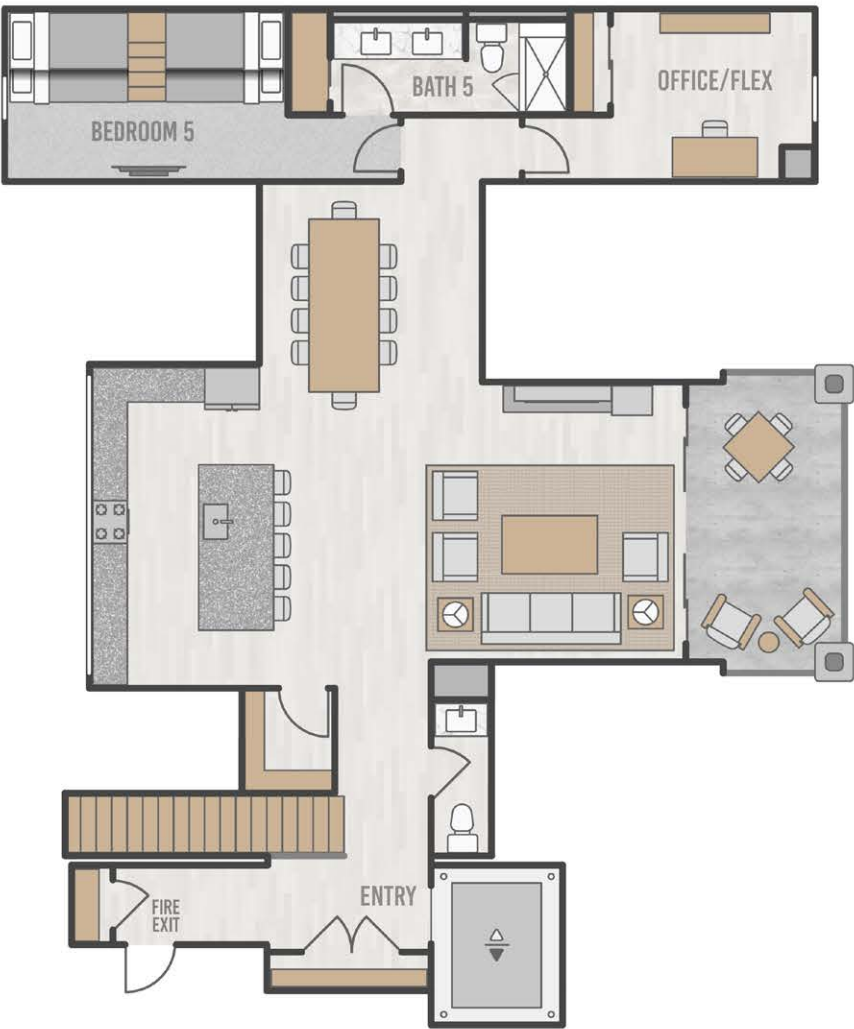


PENTHOUSE 303 FLOORPLAN

THE Highline
RESIDENCES



LOWER LEVEL



UPPER LEVEL

PENTHOUSE 303



THE Highline
RESIDENCES



EAST ELEVATION



PENTHOUSE 303 PARKING



PENTHOUSE

405

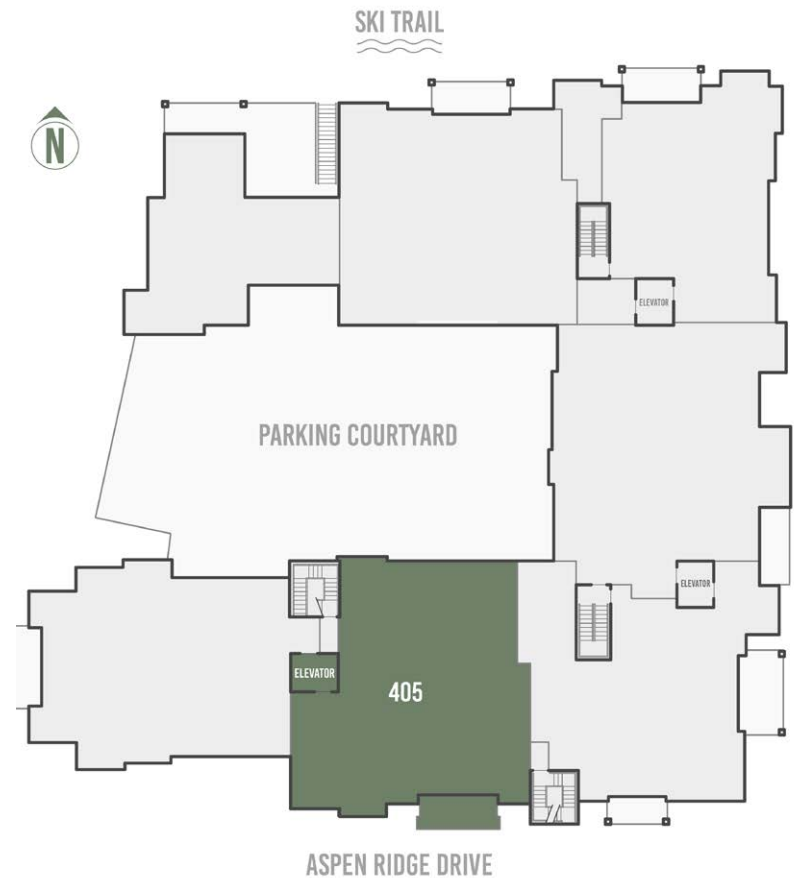
5 Bed, 5 Bath

2,685 square feet

- 5-bedroom penthouse with tremendous southern exposure and solar gain
- 5 bedrooms with private, ensuite bathrooms
- Dramatic and unencumbered views of Palmyra Peak, Gold Hill and the iconic Telluride Ski Resort
- Spacious and private top-floor primary suite with adjacent sitting room or office
- Space Theory-designed custom kitchen
- Radiant in-floor heat and air conditioning
- Optional owner upgrade for in-unit oxygenation systems



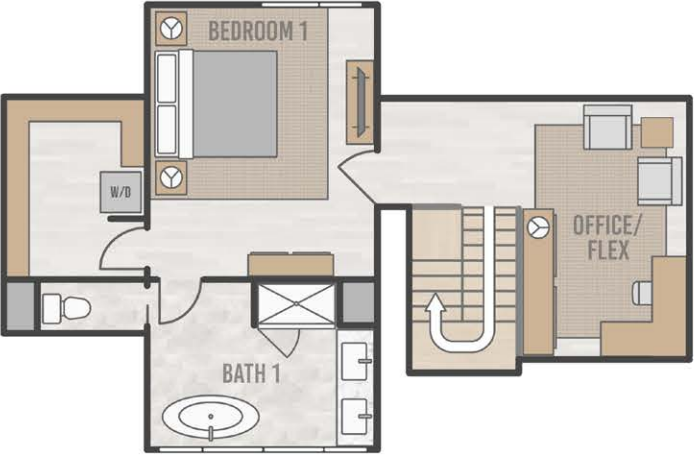
FLOORPLATE



PENTHOUSE 405 FLOORPLAN



LOWER LEVEL



UPPER LEVEL

PENTHOUSE 405

THE *Highline*
RESIDENCES



SOUTH ELEVATION



PENTHOUSE 405 PARKING

