

## RESIDENCE

# 203

4 Bed, 4 Bath

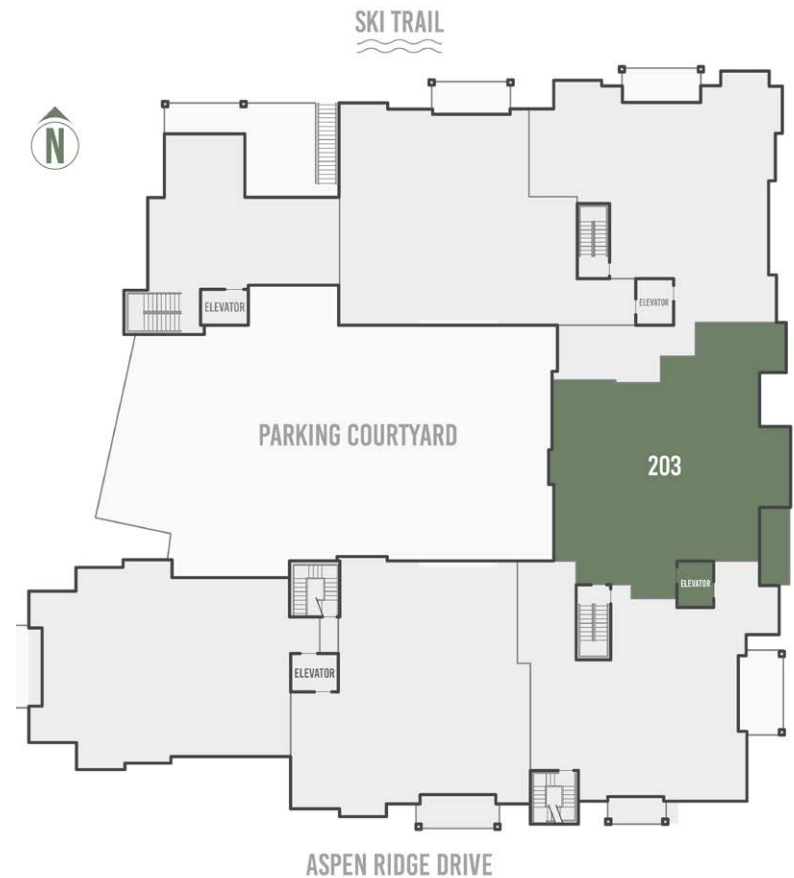
2,051 square feet

- East-facing unit with ski area view and hot tub balcony
- Tremendous floorplan optionality with bunkroom/office or 4th bedroom
- All bedrooms feature private ensuite bathrooms
- Single-level floorplan with direct elevator access
- Space Theory-designed custom kitchen
- Radiant in-floor heat and air conditioning
- Optional owner upgrade for in-unit oxygenation systems

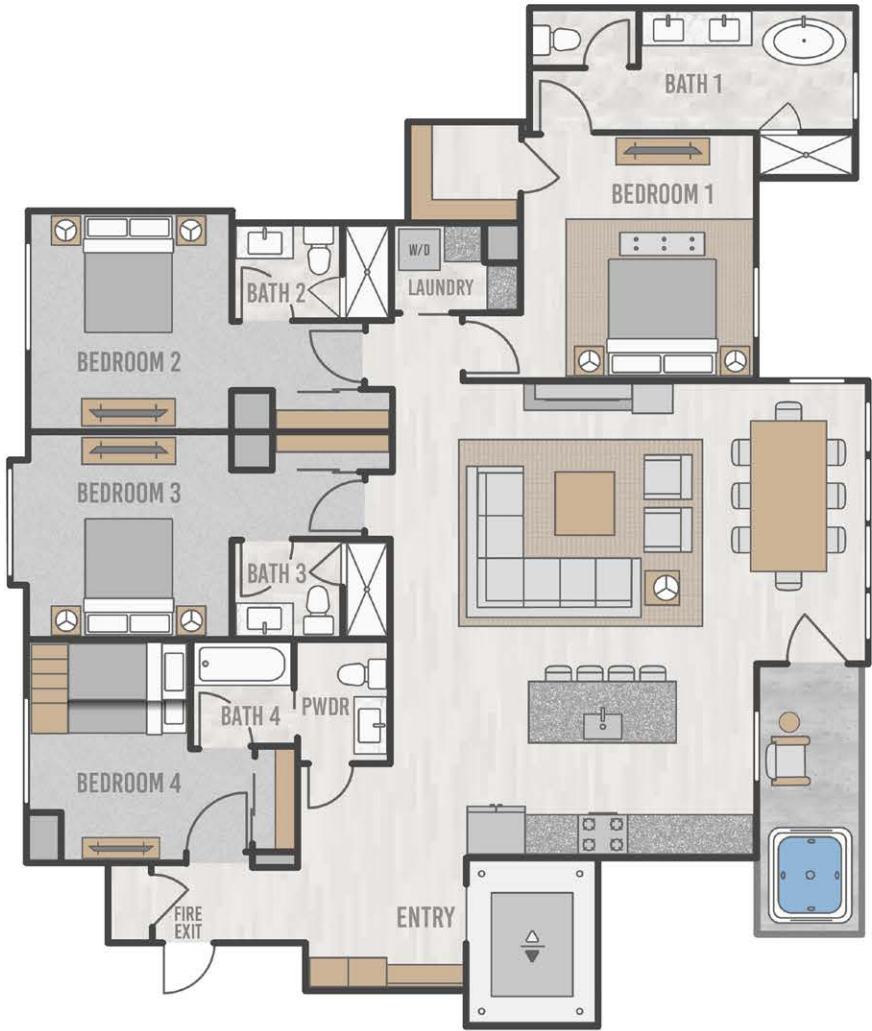


98 Aspen Ridge Drive, Mountain Village CO 81435

## FLOORPLATE



RESIDENCE 203 FLOORPLAN



# RESIDENCE 203



THE *Highline*  
RESIDENCES



## EAST ELEVATION



## RESIDENCE 203 PARKING



TELLURIDE  
PROPERTIES  
On Top of Telluride

**IMPORTANT NOTICE:** Residence images are artist conceptual renderings intended solely for illustrative purposes and may not accurately represent the details of this specific residence and should not be relied upon, nor do they create an agreement or commitment to deliver the residence in accordance with such illustrations. The specific orientation, views, window configurations, features, ceiling heights and design elements vary from unit to unit and are subject to change. Any square footages listed have been measured to the outside face of the exterior walls and are approximated based on architectural plans, not as built dimensions, and are subject to change. Interested parties are advised to inspect the full project plans and specifications, which contain all the design details of each home; they are available for review upon request. All residences are sold unfurnished - the furniture shown on the floor plan is not included in purchase price. Presented by O'Neill Stetina Group - Telluride Properties.



PENTHOUSE

# 303

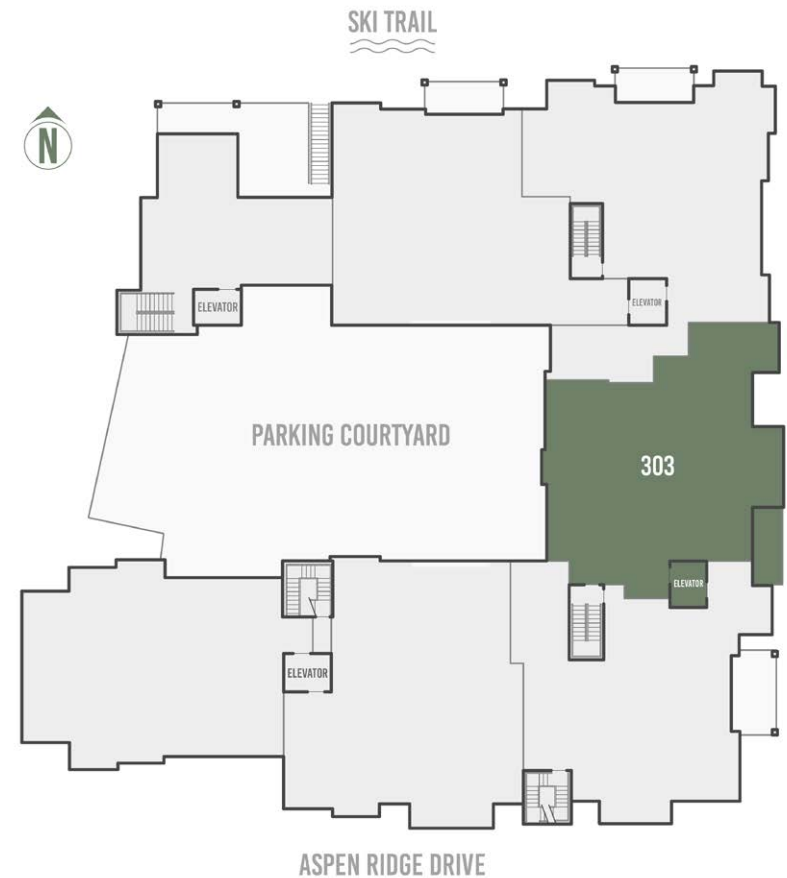
5 Bed, 5 Bath

3,361 square feet

- Penthouse with dramatic ski area views
- Bi-level design with top-floor living spaces
- Secondary living area/family room with adjacent hot tub deck
- Sunny and spacious top-floor office
- Space Theory-designed custom kitchen
- Radiant in-floor heat and air conditioning
- Optional owner upgrade for in-unit oxygenation systems

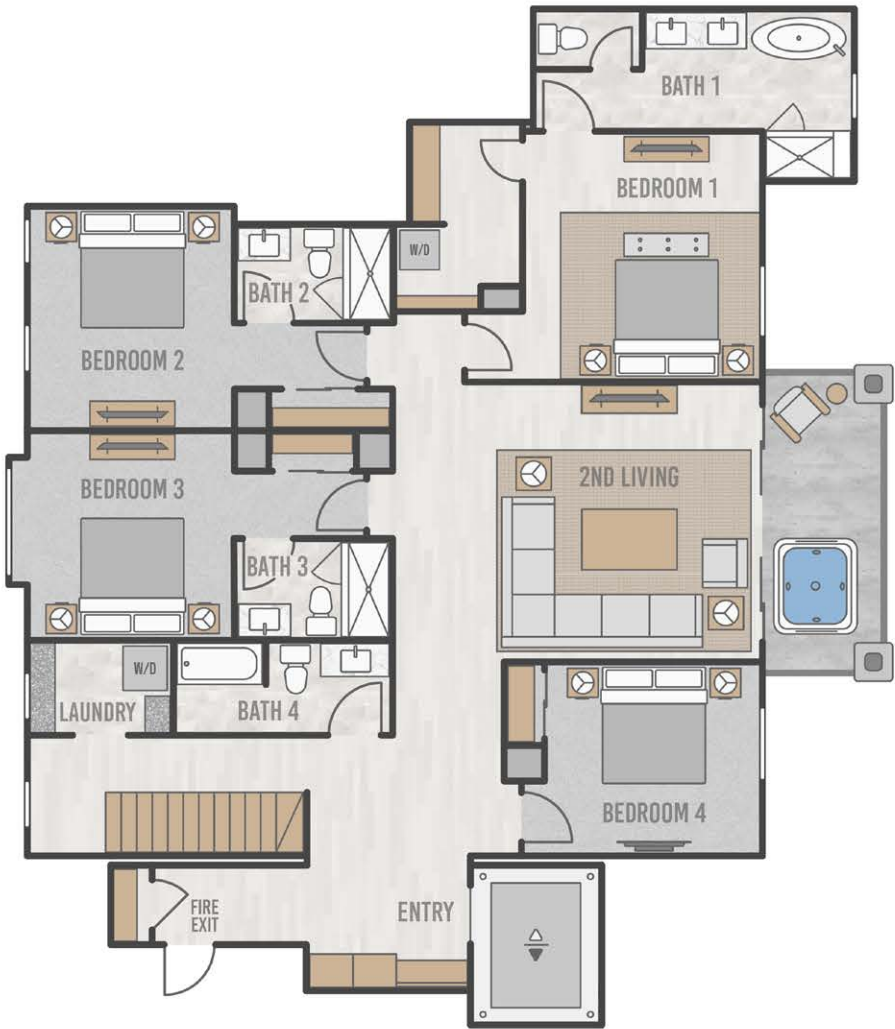


## FLOORPLATE

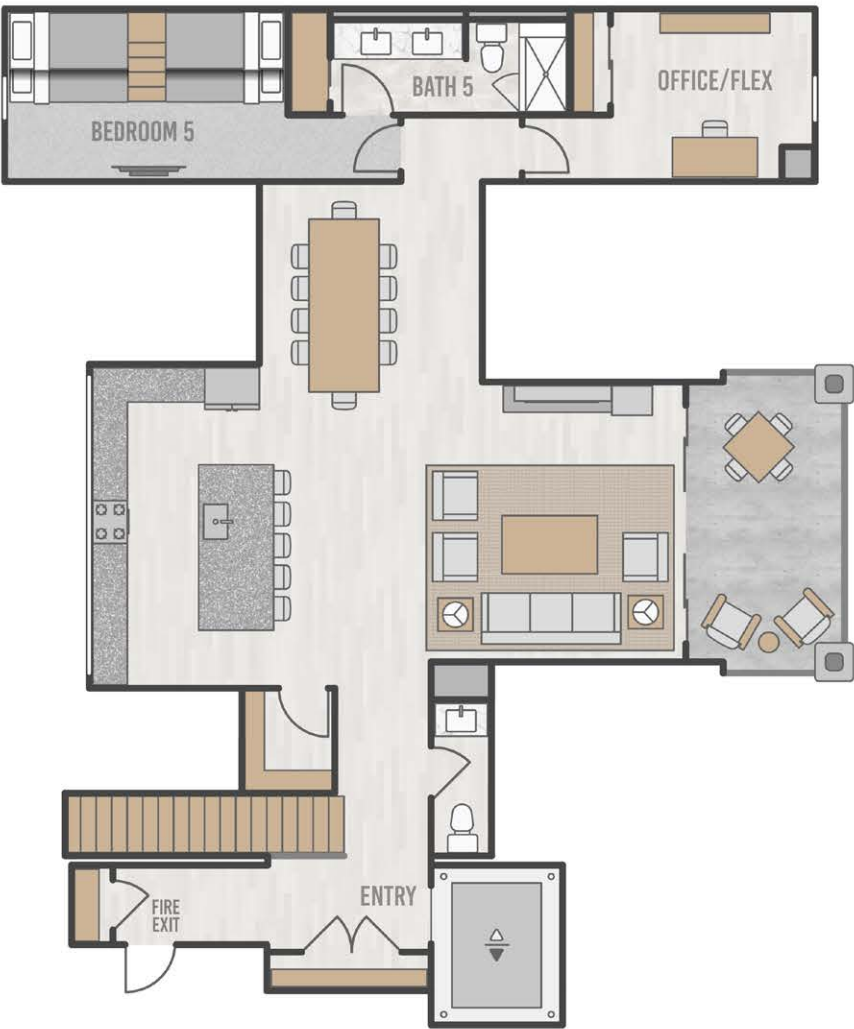




PENTHOUSE 303 FLOORPLAN



LOWER LEVEL



UPPER LEVEL



PENTHOUSE 303



THE Highline  
RESIDENCES



## EAST ELEVATION



## PENTHOUSE 303 PARKING



**IMPORTANT NOTICE:** Residence images are artist conceptual renderings intended solely for illustrative purposes and may not accurately represent the details of this specific residence and should not be relied upon, nor do they create an agreement or commitment to deliver the residence in accordance with such illustrations. The specific orientation, views, window configurations, features, ceiling heights and design elements vary from unit to unit and are subject to change. Any square footages listed have been measured to the outside face of the exterior walls and are approximated based on architectural plans, not as built dimensions, and are subject to change. Interested parties are advised to inspect the full project plans and specifications, which contain all the design details of each home; they are available for review upon request. All residences are sold unfurnished - the furniture shown on the floor plan is not included in purchase price. Presented by O'Neill Stetina Group – Telluride Properties.





PENTHOUSE

# 405

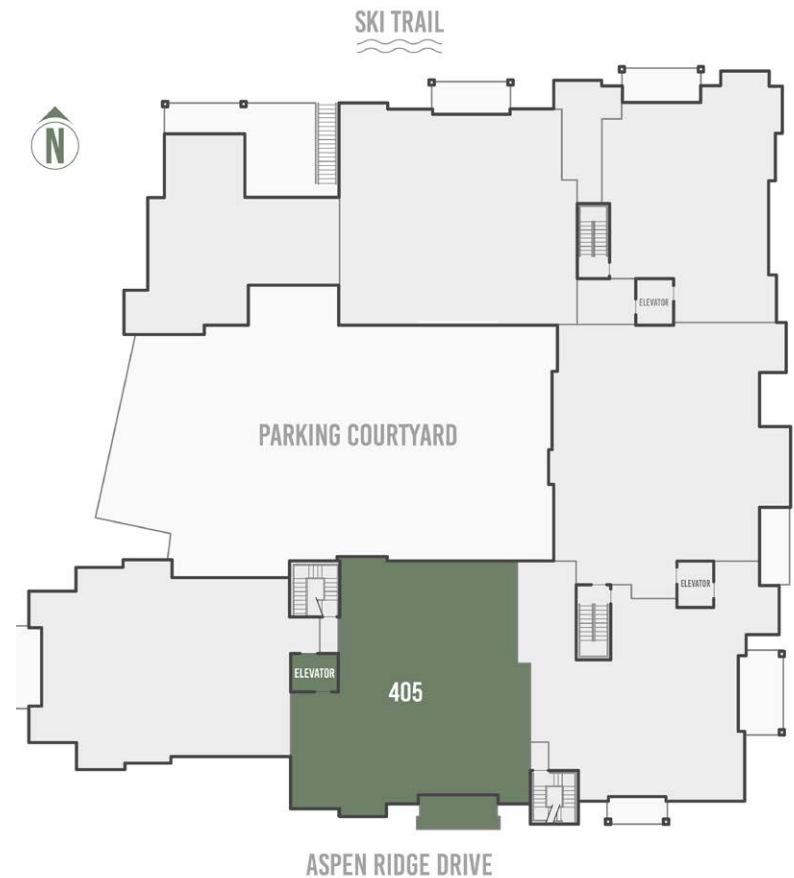
5 Bed, 5 Bath

2,685 square feet

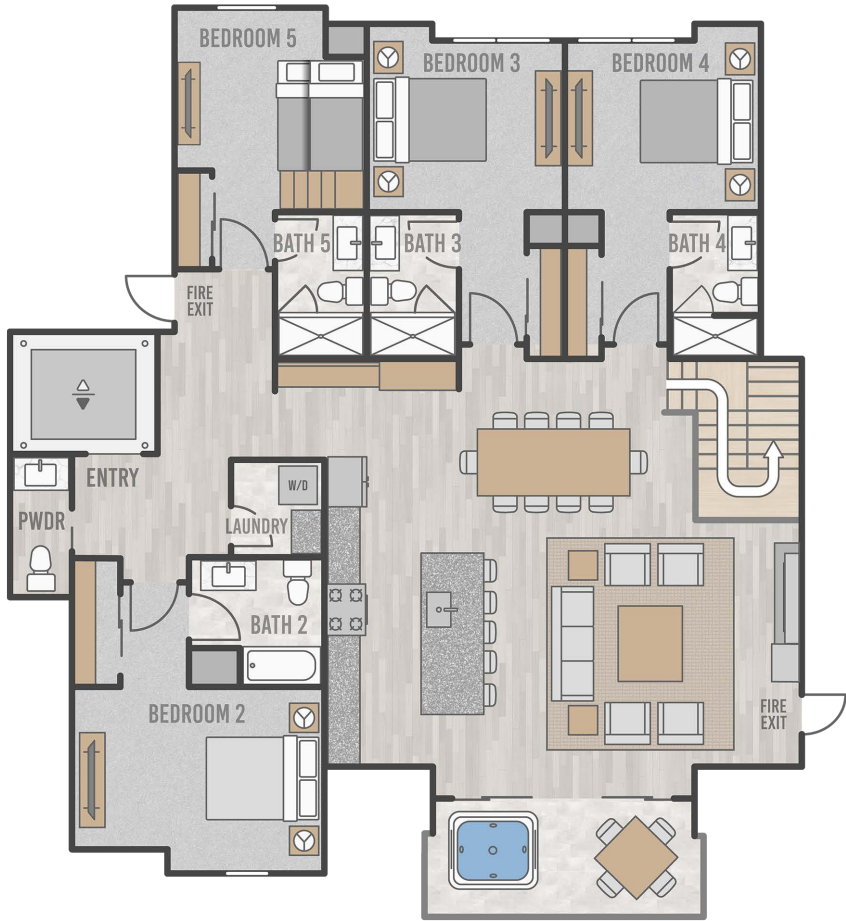
- 5-bedroom penthouse with tremendous southern exposure and solar gain
- 5 bedrooms with private, ensuite bathrooms
- Dramatic and unencumbered views of Palmyra Peak, Gold Hill and the iconic Telluride Ski Resort
- Spacious and private top-floor primary suite with adjacent sitting room or office
- Space Theory-designed custom kitchen
- Radiant in-floor heat and air conditioning
- Optional owner upgrade for in-unit oxygenation systems



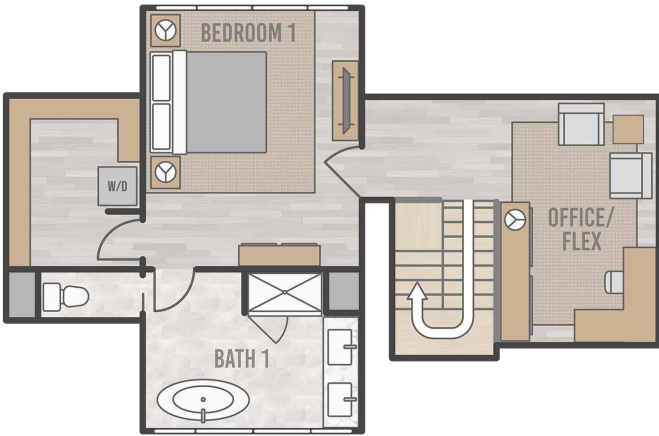
## FLOORPLATE



PENTHOUSE 405 FLOORPLAN



LOWER LEVEL



UPPER LEVEL

# PENTHOUSE 405

THE *Highline*  
RESIDENCES





## SOUTH ELEVATION



## PENTHOUSE 405 PARKING



**IMPORTANT NOTICE:** Residence images are artist conceptual renderings intended solely for illustrative purposes and may not accurately represent the details of this specific residence and should not be relied upon, nor do they create an agreement or commitment to deliver the residence in accordance with such illustrations. The specific orientation, views, window configurations, features, ceiling heights and design elements vary from unit to unit and are subject to change. Any square footages listed have been measured to the outside face of the exterior walls and are approximated based on architectural plans, not as built dimensions, and are subject to change. Interested parties are advised to inspect the full project plans and specifications, which contain all the design details of each home; they are available for review upon request. All residences are sold unfurnished - the furniture shown on the floor plan is not included in purchase price. Presented by O'Neill Stetina Group – Telluride Properties.

