

RESIDENCE

# 203

4 Bed, 4 Bath

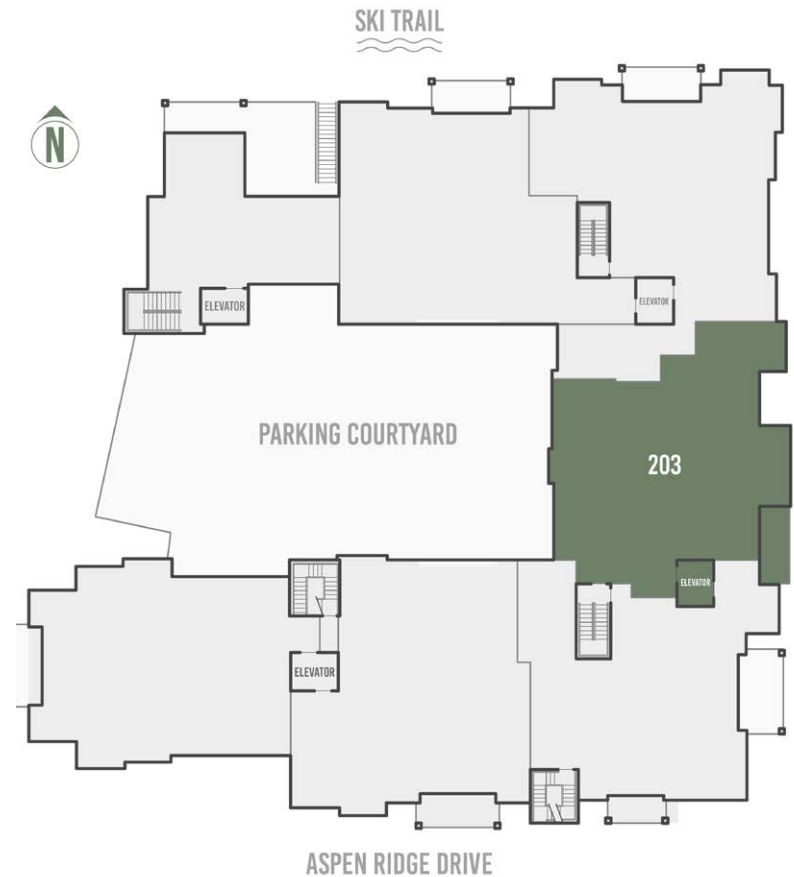
2,051 square feet

- East-facing unit with ski area view and hot tub balcony
- Tremendous floorplan optionality with bunkroom/office or 4th bedroom
- All bedrooms feature private ensuite bathrooms
- Single-level floorplan with direct elevator access
- Space Theory-designed custom kitchen
- Radiant in-floor heat and air conditioning
- Optional owner upgrade for in-unit oxygenation systems

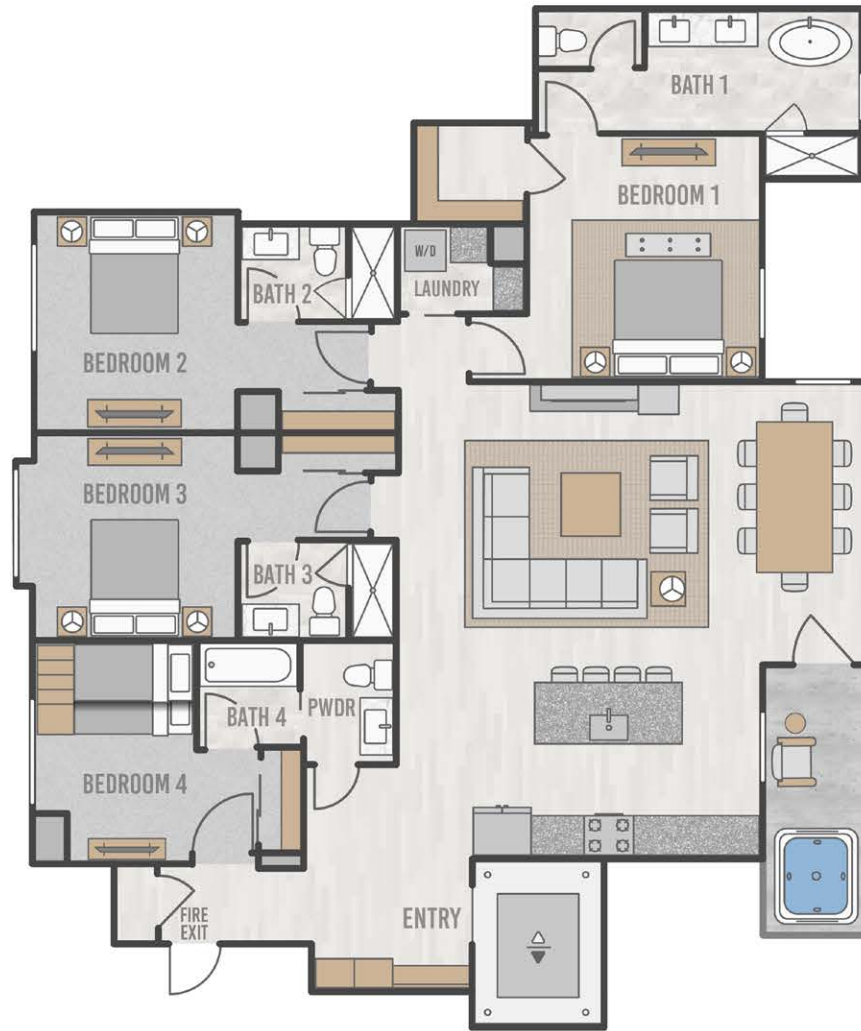


98 Aspen Ridge Drive, Mountain Village CO 81435

FLOORPLATE



# RESIDENCE 203 FLOORPLAN



RESIDENCE 203



THE Highline  
RESIDENCES



## EAST ELEVATION




## RESIDENCE 203 PARKING



THE *Highline*  
RESIDENCES



TELLURIDE  
PROPERTIES  
On Top of Telluride

**IMPORTANT NOTICE:** Residence images are artist conceptual renderings intended solely for illustrative purposes and may not accurately represent the details of this specific residence and should not be relied upon, nor do they create an agreement or commitment to deliver the residence in accordance with such illustrations. The specific orientation, views, window configurations, features, ceiling heights and design elements vary from unit to unit and are subject to change. Any square footages listed have been measured to the outside face of the exterior walls and are approximated based on architectural plans, not as built dimensions, and are subject to change. Interested parties are advised to inspect the full project plans and specifications, which contain all the design details of each home; they are available for review upon request. All residences are sold unfurnished - the furniture shown on the floor plan is not included in purchase price. Presented by O'Neill Stetina Group - Telluride Properties. 

PENTHOUSE

# 303

5 Bed, 5 Bath

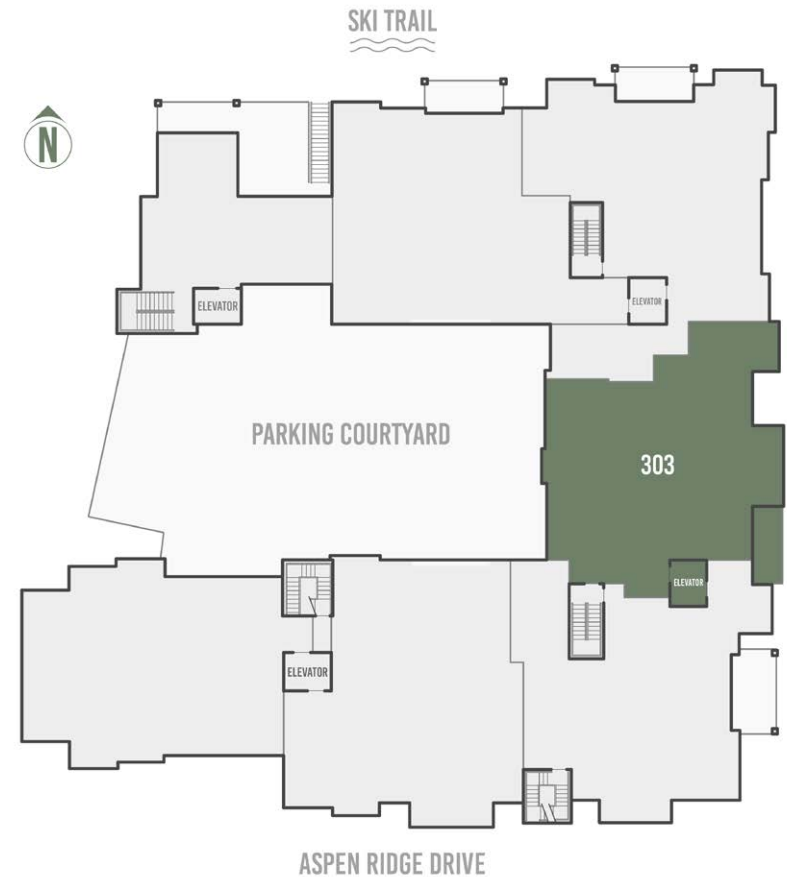
3,361 square feet

- Penthouse with dramatic ski area views
- Bi-level design with top-floor living spaces
- Secondary living area/family room with adjacent hot tub deck
- Sunny and spacious top-floor office
- Space Theory-designed custom kitchen
- Radiant in-floor heat and air conditioning
- Optional owner upgrade for in-unit oxygenation systems

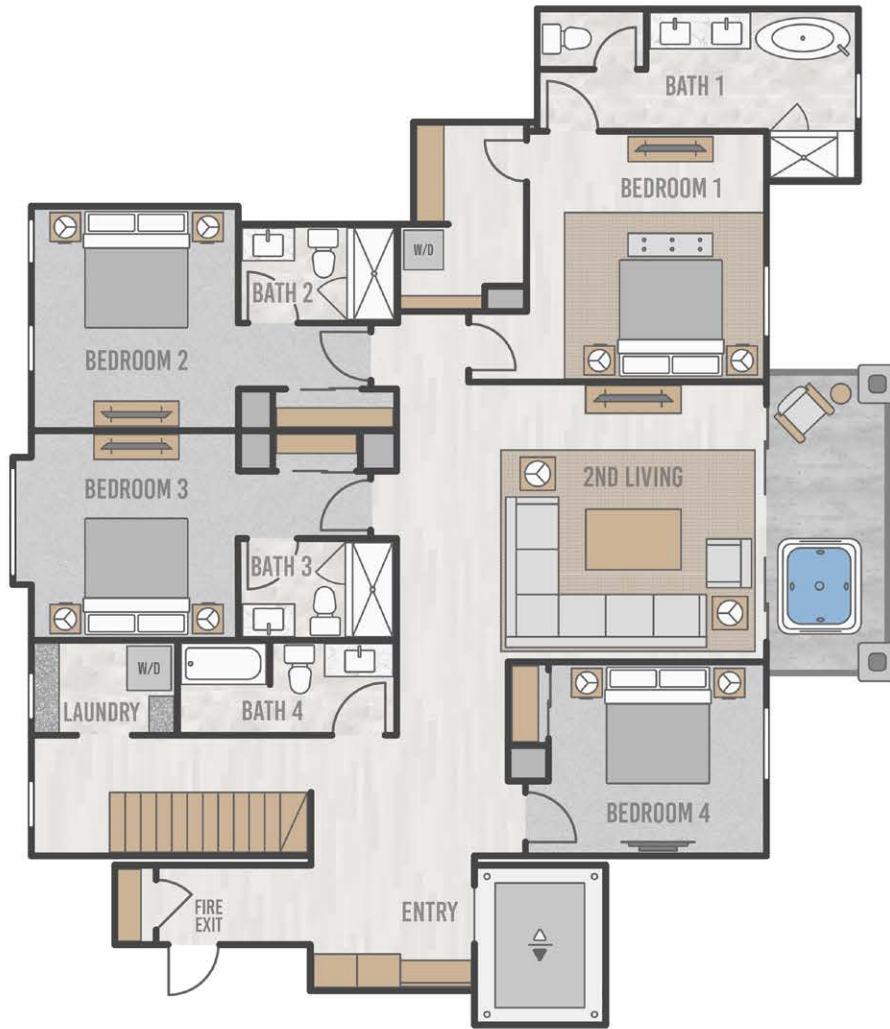


98 Aspen Ridge Drive, Mountain Village CO 81435

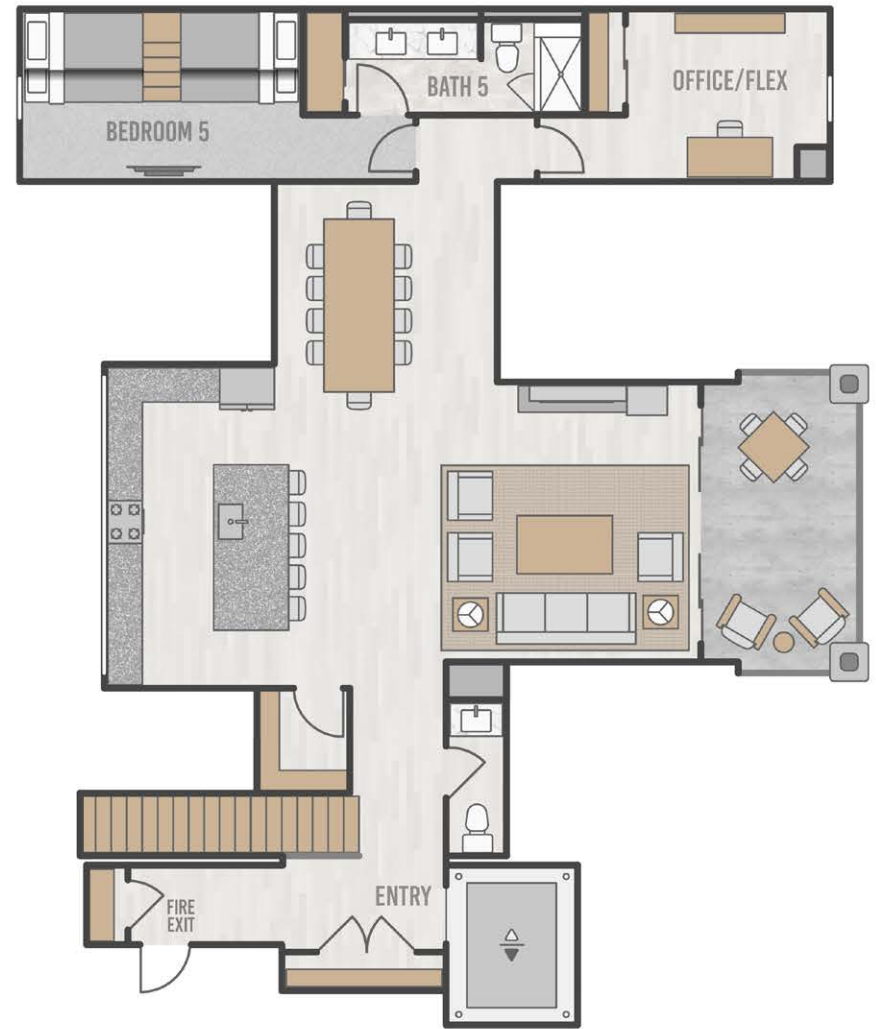
FLOORPLATE



# PENTHOUSE 303 FLOORPLAN



LOWER LEVEL



UPPER LEVEL

PENTHOUSE 303



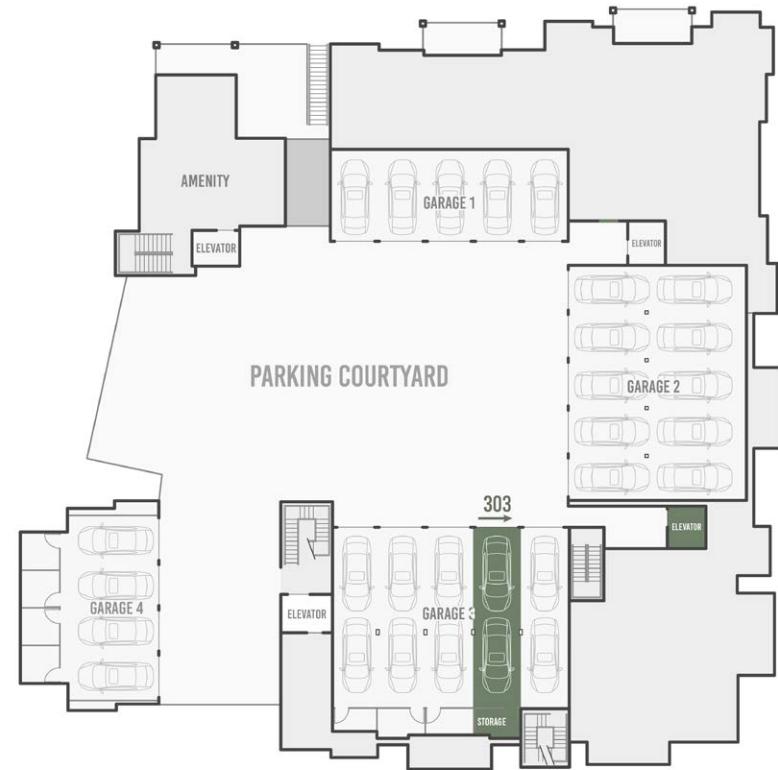
THE Highline  
RESIDENCES



## EAST ELEVATION



## PENTHOUSE 303 PARKING





PENTHOUSE

# 306

5 Bed, 5 Bath

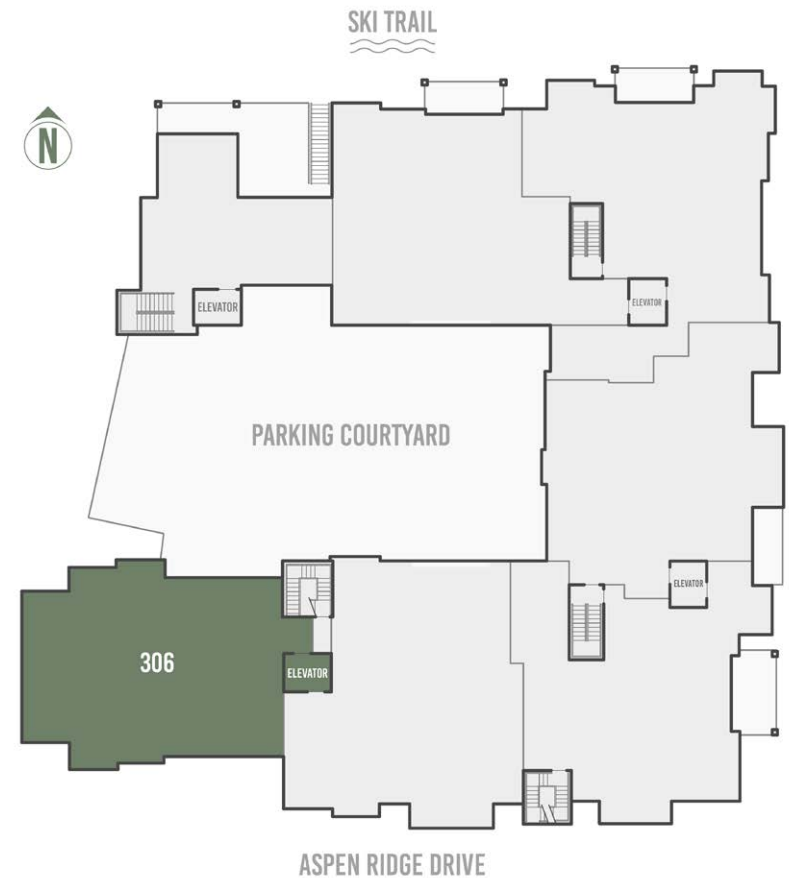
3,577 square feet

- 5-bedroom penthouse with tremendous S-SW-W exposures resulting in exceptional solar gain
- Panoramic views from Palmyra to Wilson to Lone Cone and the La Sals to the West
- Spacious main-floor living areas with additional living/family room on upper floor
- All 5 bedrooms feature private, ensuite bathrooms
- Space Theory-designed custom kitchen and beverage center
- Radiant in-floor heat and air conditioning
- Optional owner upgrade for in-unit oxygenation systems

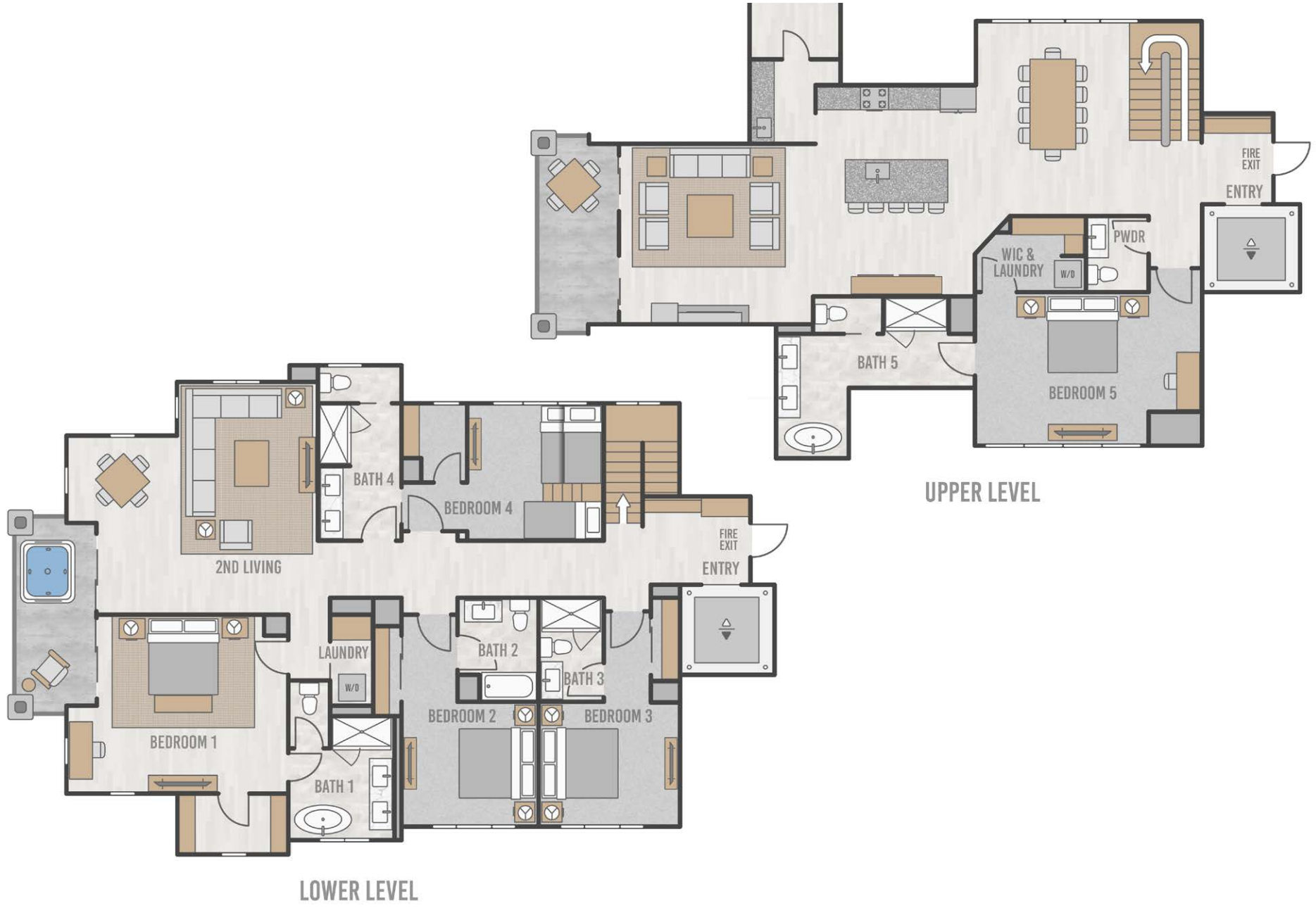


98 Aspen Ridge Drive, Mountain Village CO 81435

FLOORPLATE



PENTHOUSE 306 FLOORPLAN



PENTHOUSE 306



THE Highline  
RESIDENCES



# SOUTH ELEVATION



# PENTHOUSE 306 PARKING



**IMPORTANT NOTICE:** Residence images are artist conceptual renderings intended solely for illustrative purposes and may not accurately represent the details of this specific residence and should not be relied upon, nor do they create an agreement or commitment to deliver the residence in accordance with such illustrations. The specific orientation, views, window configurations, features, ceiling heights and design elements vary from unit to unit and are subject to change. Any square footages listed have been measured to the outside face of the exterior walls and are approximated based on architectural plans, not as built dimensions, and are subject to change. Interested parties are advised to inspect the full project plans and specifications, which contain all the design details of each home; they are available for review upon request. All residences are sold unfurnished - the furniture shown on the floor plan is not included in purchase price. Presented by O'Neill Stetina Group – Telluride Properties.

PENTHOUSE

# 405

5 Bed, 5 Bath

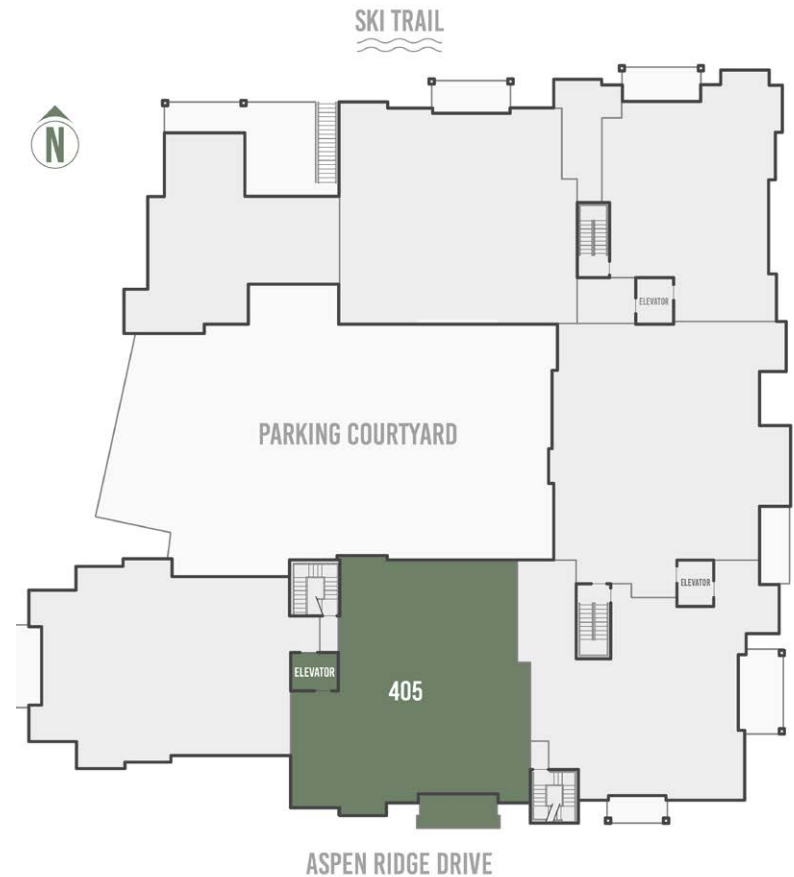
2,685 square feet

- 5-bedroom penthouse with tremendous southern exposure and solar gain
- 5 bedrooms with private, ensuite bathrooms
- Dramatic and unencumbered views of Palmyra Peak, Gold Hill and the iconic Telluride Ski Resort
- Spacious and private top-floor primary suite with adjacent sitting room or office
- Space Theory-designed custom kitchen
- Radiant in-floor heat and air conditioning
- Optional owner upgrade for in-unit oxygenation systems

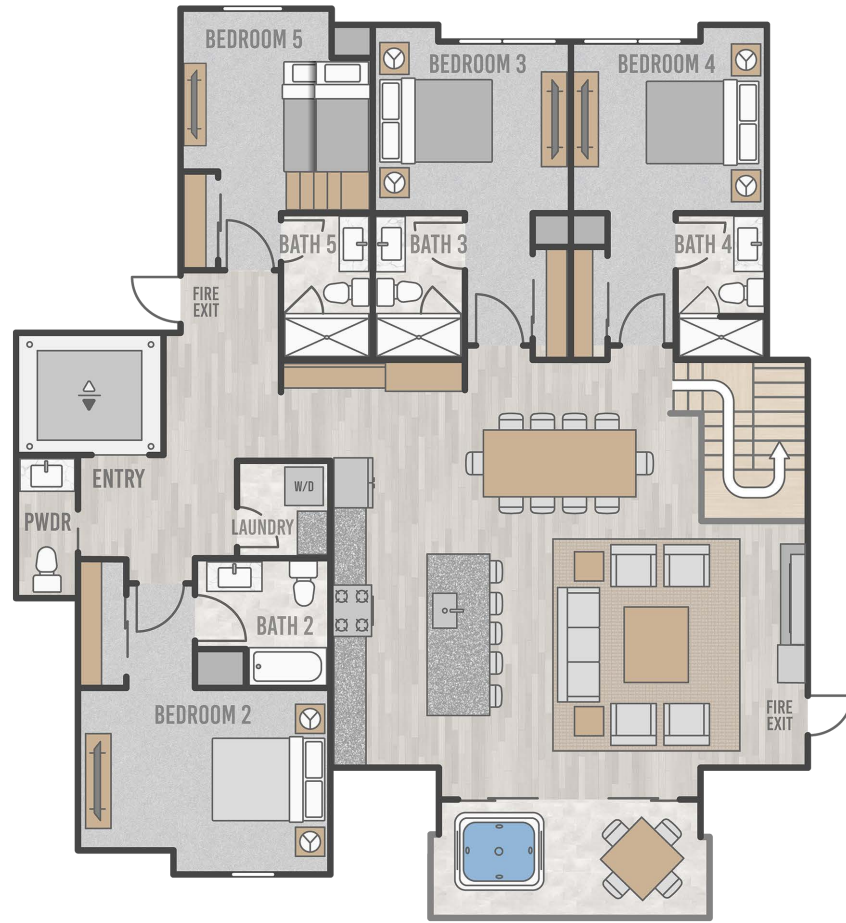


98 Aspen Ridge Drive, Mountain Village CO 81435

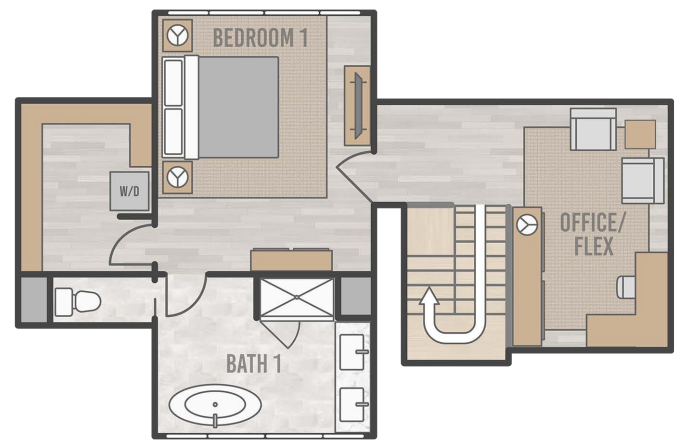
FLOORPLATE



# PENTHOUSE 405 FLOORPLAN



LOWER LEVEL



UPPER LEVEL

PENTHOUSE 405



THE Highline  
RESIDENCES



# SOUTH ELEVATION



# PENTHOUSE 405 PARKING



**IMPORTANT NOTICE:** Residence images are artist conceptual renderings intended solely for illustrative purposes and may not accurately represent the details of this specific residence and should not be relied upon, nor do they create an agreement or commitment to deliver the residence in accordance with such illustrations. The specific orientation, views, window configurations, features, ceiling heights and design elements vary from unit to unit and are subject to change. Any square footages listed have been measured to the outside face of the exterior walls and are approximated based on architectural plans, not as built dimensions, and are subject to change. Interested parties are advised to inspect the full project plans and specifications, which contain all the design details of each home; they are available for review upon request. All residences are sold unfurnished - the furniture shown on the floor plan is not included in purchase price. Presented by O'Neill Stetina Group – Telluride Properties.