

RESIDENCE

102

4 Bed, 4 Bath

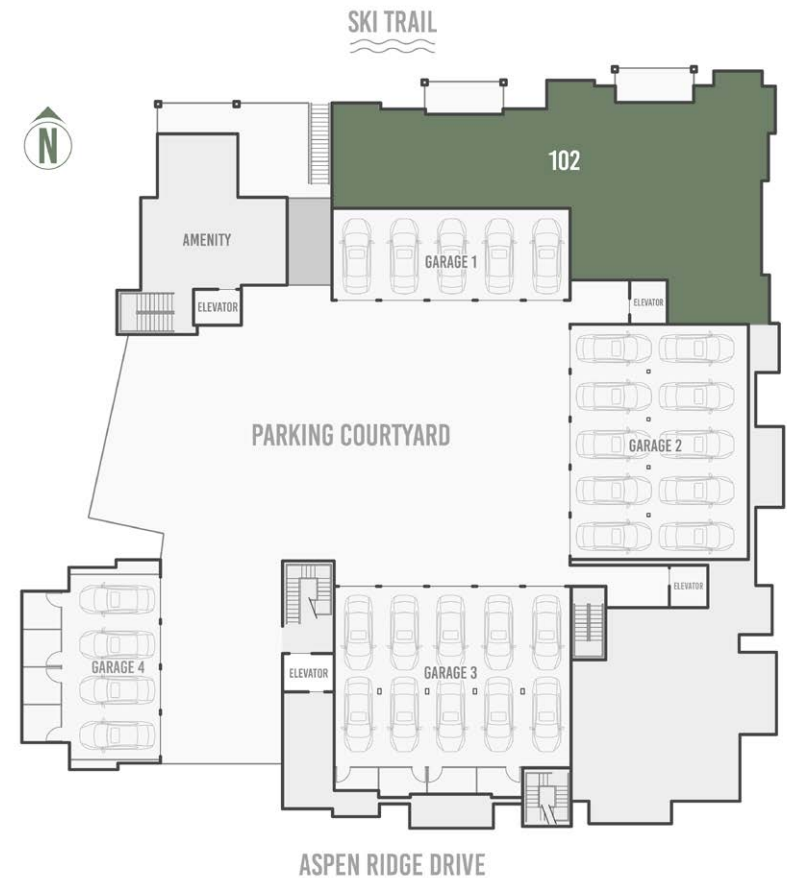
2,636 square feet

- Single-level floorplan
- Direct slopeside residence with private, garden-level entrance
- Dramatic San Sophia views from living room and both primary and guest suites
- Spacious secondary living space/family room
- Space Theory-designed custom kitchen and beverage center
- Radiant in-floor heat and air conditioning
- Optional owner upgrade for in-unit oxygenation systems



98 Aspen Ridge Drive, Mountain Village CO 81435

FLOORPLATE



RESIDENCE 102 FLOORPLAN



THE *Highline*
RESIDENCES



RESIDENCE 102



THE *Highline*
RESIDENCES



NORTH ELEVATION



EAST ELEVATION



RESIDENCE 102 PARKING



IMPORTANT NOTICE: Residence images are artist conceptual renderings intended solely for illustrative purposes and may not accurately represent the details of this specific residence and should not be relied upon, nor do they create an agreement or commitment to deliver the residence in accordance with such illustrations. The specific orientation, views, window configurations, features, ceiling heights and design elements vary from unit to unit and are subject to change. Any square footages listed have been measured to the outside face of the exterior walls and are approximated based on architectural plans, not as built dimensions, and are subject to change. Interested parties are advised to inspect the full project plans and specifications, which contain all the design details of each home; they are available for review upon request. All residences are sold unfurnished - the furniture shown on the floor plan is not included in purchase price. Presented by O'Neill Stetina Group – Telluride Properties.

RESIDENCE

203

4 Bed, 4 Bath

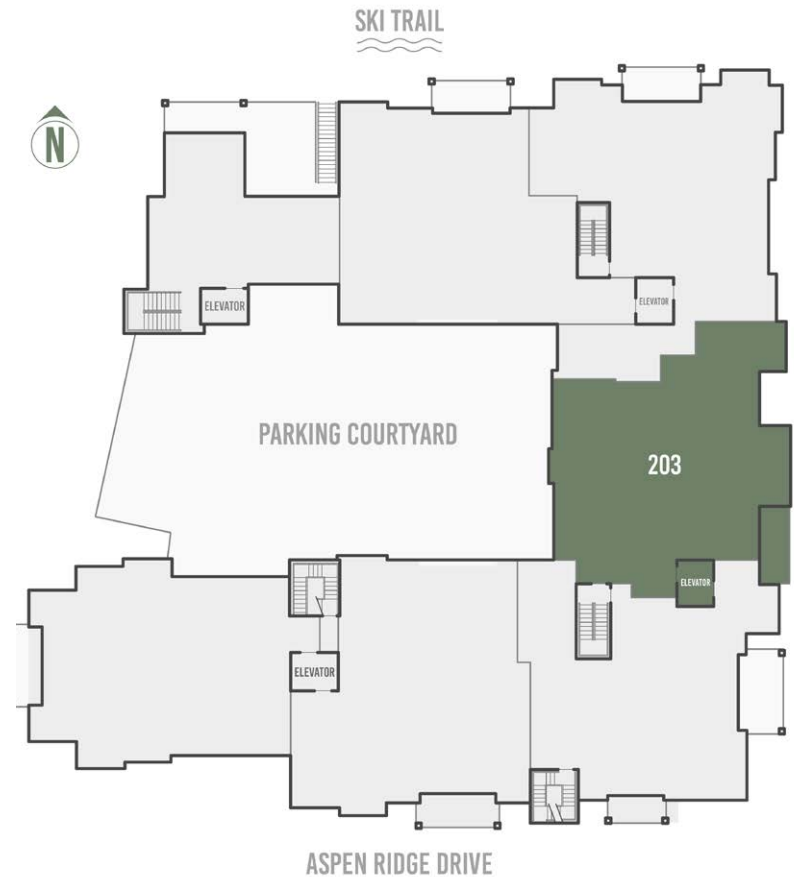
2,051 square feet

- East-facing unit with ski area view and hot tub balcony
- Tremendous floorplan optionality with bunkroom/office or 4th bedroom
- All bedrooms feature private ensuite bathrooms
- Single-level floorplan with direct elevator access
- Space Theory-designed custom kitchen
- Radiant in-floor heat and air conditioning
- Optional owner upgrade for in-unit oxygenation systems

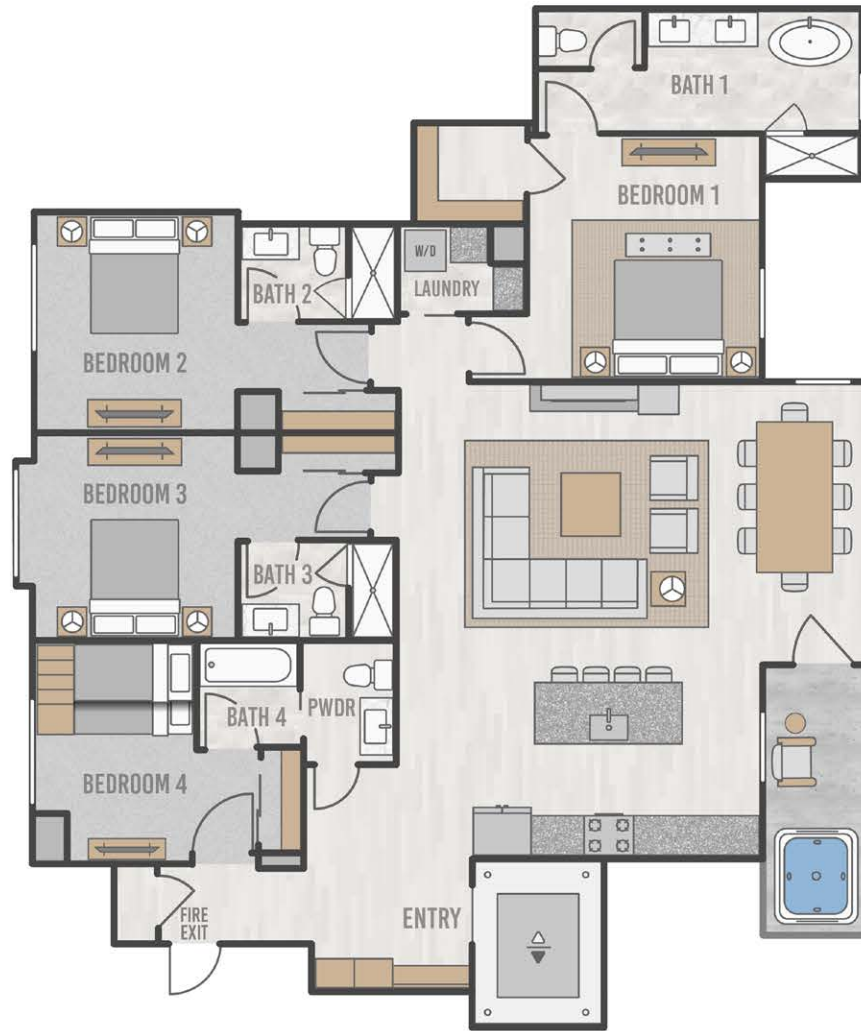


98 Aspen Ridge Drive, Mountain Village CO 81435

FLOORPLATE



RESIDENCE 203 FLOORPLAN



RESIDENCE 203



THE Highline
RESIDENCES



EAST ELEVATION




RESIDENCE 203 PARKING



THE *Highline*
RESIDENCES



TELLURIDE
PROPERTIES
On Top of Telluride

IMPORTANT NOTICE: Residence images are artist conceptual renderings intended solely for illustrative purposes and may not accurately represent the details of this specific residence and should not be relied upon, nor do they create an agreement or commitment to deliver the residence in accordance with such illustrations. The specific orientation, views, window configurations, features, ceiling heights and design elements vary from unit to unit and are subject to change. Any square footages listed have been measured to the outside face of the exterior walls and are approximated based on architectural plans, not as built dimensions, and are subject to change. Interested parties are advised to inspect the full project plans and specifications, which contain all the design details of each home; they are available for review upon request. All residences are sold unfurnished - the furniture shown on the floor plan is not included in purchase price. Presented by O'Neill Stetina Group - Telluride Properties. 

PENTHOUSE

302

5 Bed, 5 Bath

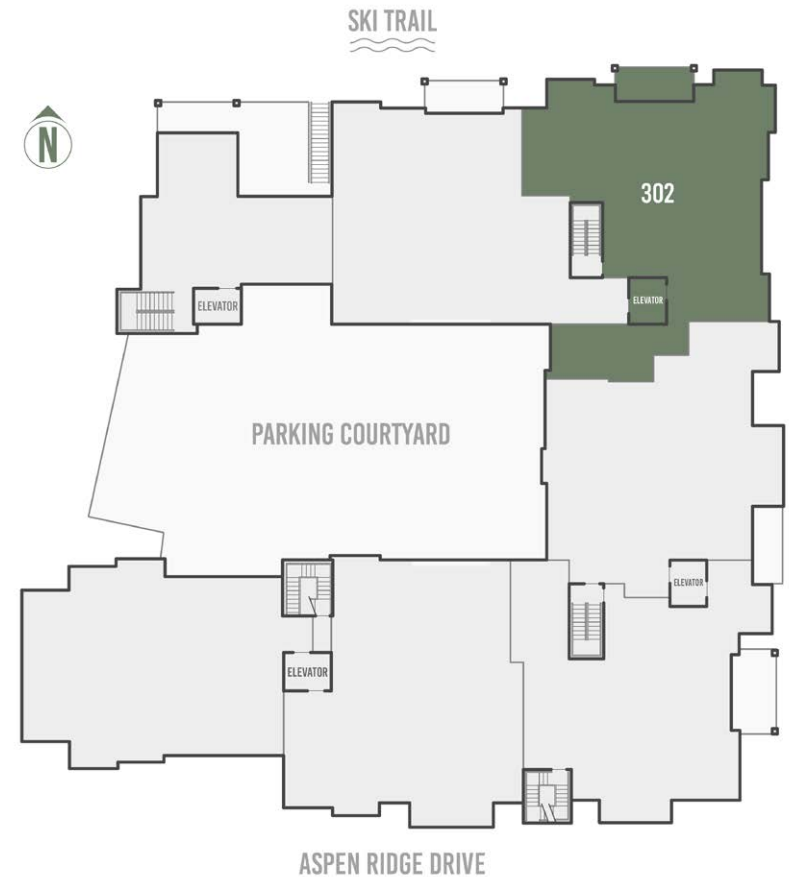
3,210 square feet

- Corner Penthouse with panoramic views of San Sophia Range to ski area
- Bi-level design with top-floor living spaces
- Secondary living area/family room with adjacent slopeside hot tub deck
- Premium primary suite with office nook
- Space Theory-designed custom kitchen and butler's pantry
- Radiant in-floor heat and air conditioning
- Optional owner upgrade for in-unit oxygenation systems



98 Aspen Ridge Drive, Mountain Village CO 81435

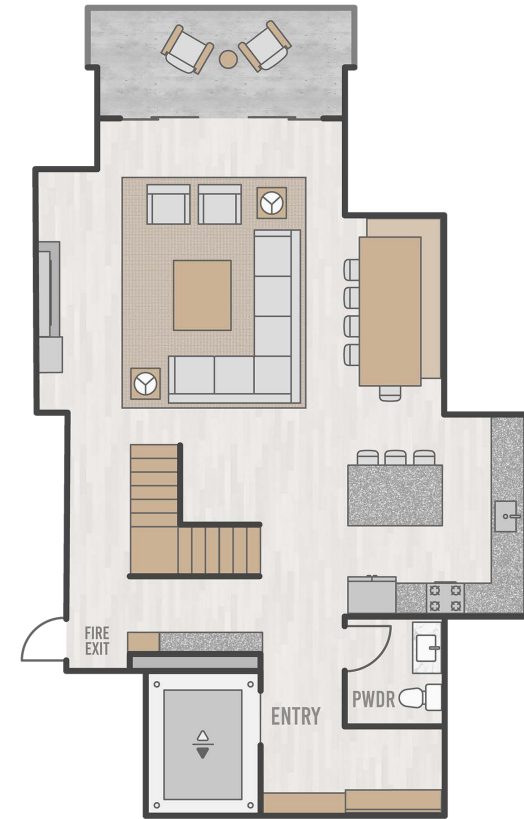
FLOORPLATE



PENTHOUSE 302 FLOORPLAN



LOWER LEVEL



UPPER LEVEL

PENTHOUSE 302



THE *Highline*
RESIDENCES



NORTH ELEVATION



EAST ELEVATION



PENTHOUSE 302 PARKING



TELLURIDE
PROPERTIES
On Top of Telluride

IMPORTANT NOTICE: Residence images are artist conceptual renderings intended solely for illustrative purposes and may not accurately represent the details of this specific residence and should not be relied upon, nor do they create an agreement or commitment to deliver the residence in accordance with such illustrations. The specific orientation, views, window configurations, features, ceiling heights and design elements vary from unit to unit and are subject to change. Any square footages listed have been measured to the outside face of the exterior walls and are approximated based on architectural plans, not as built dimensions, and are subject to change. Interested parties are advised to inspect the full project plans and specifications, which contain all the design details of each home; they are available for review upon request. All residences are sold unfurnished - the furniture shown on the floor plan is not included in purchase price. Presented by O'Neill Stetina Group – Telluride Properties.

PENTHOUSE

306

5 Bed, 5 Bath

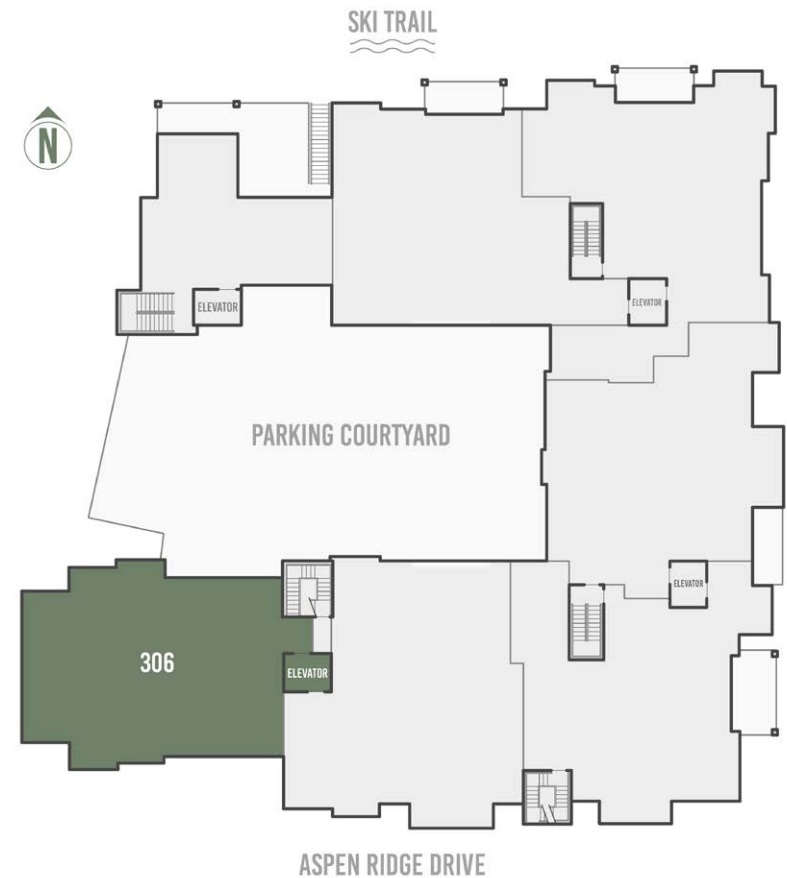
3,577 square feet

- 5-bedroom penthouse with tremendous S-SW-W exposures resulting in exceptional solar gain
- Panoramic views from Palmyra to Wilson to Lone Cone and the La Sals to the West
- Spacious main-floor living areas with additional living/family room on upper floor
- All 5 bedrooms feature private, ensuite bathrooms
- Space Theory-designed custom kitchen and beverage center
- Radiant in-floor heat and air conditioning
- Optional owner upgrade for in-unit oxygenation systems



98 Aspen Ridge Drive, Mountain Village CO 81435

FLOORPLATE



PENTHOUSE 306 FLOORPLAN



THE *Highline*
RESIDENCES



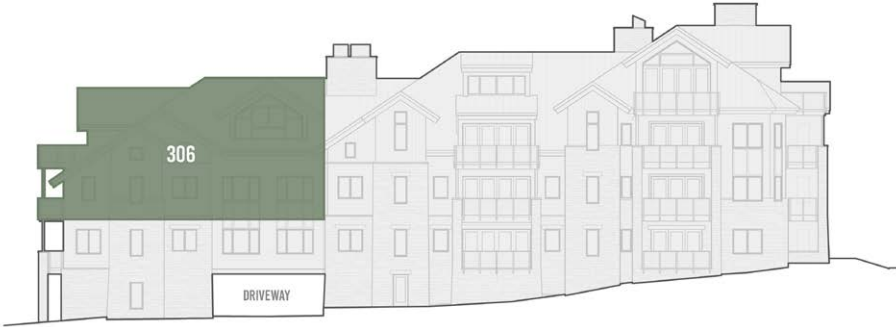
PENTHOUSE 306



THE *Highline*
RESIDENCES



SOUTH ELEVATION



PENTHOUSE 306 PARKING



IMPORTANT NOTICE: Residence images are artist conceptual renderings intended solely for illustrative purposes and may not accurately represent the details of this specific residence and should not be relied upon, nor do they create an agreement or commitment to deliver the residence in accordance with such illustrations. The specific orientation, views, window configurations, features, ceiling heights and design elements vary from unit to unit and are subject to change. Any square footages listed have been measured to the outside face of the exterior walls and are approximated based on architectural plans, not as built dimensions, and are subject to change. Interested parties are advised to inspect the full project plans and specifications, which contain all the design details of each home; they are available for review upon request. All residences are sold unfurnished - the furniture shown on the floor plan is not included in purchase price. Presented by O'Neill Stetina Group – Telluride Properties.

PENTHOUSE

405

5 Bed, 5 Bath

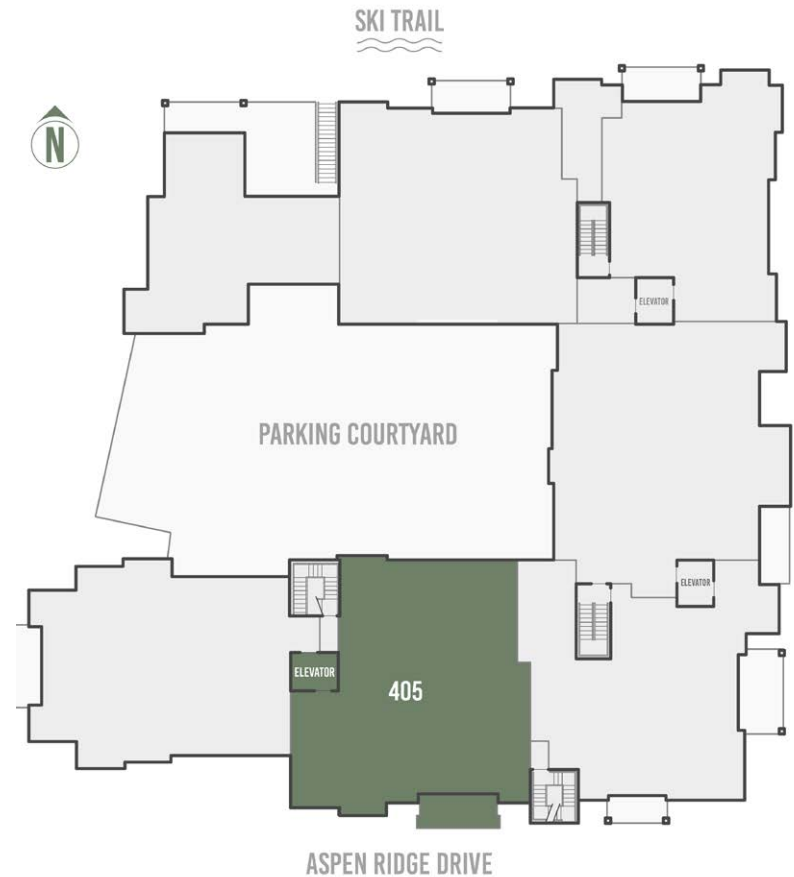
2,685 square feet

- 5-bedroom penthouse with tremendous southern exposure and solar gain
- 5 bedrooms with private, ensuite bathrooms
- Dramatic and unencumbered views of Palmyra Peak, Gold Hill and the iconic Telluride Ski Resort
- Spacious and private top-floor primary suite with adjacent sitting room or office
- Space Theory-designed custom kitchen
- Radiant in-floor heat and air conditioning
- Optional owner upgrade for in-unit oxygenation systems

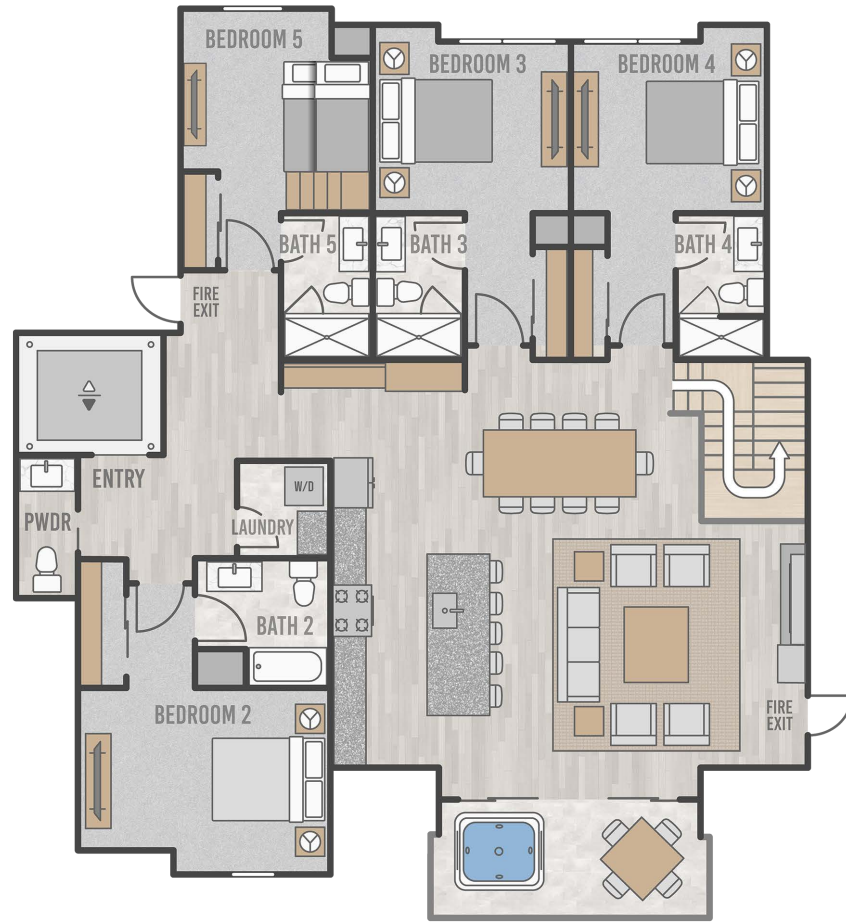


98 Aspen Ridge Drive, Mountain Village CO 81435

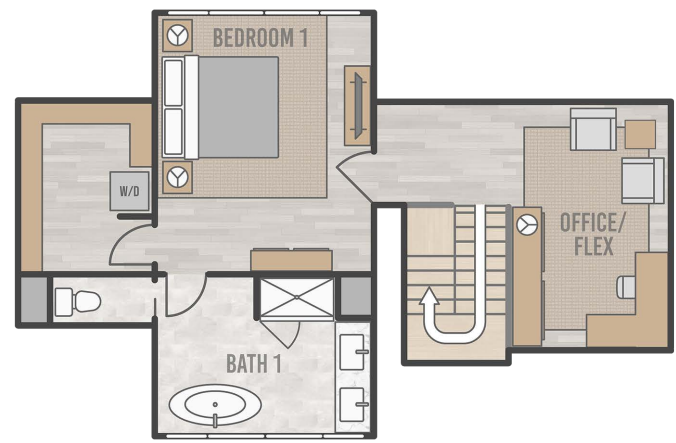
FLOORPLATE



PENTHOUSE 405 FLOORPLAN



LOWER LEVEL



UPPER LEVEL

PENTHOUSE 405



THE *Highline*
RESIDENCES



SOUTH ELEVATION



PENTHOUSE 405 PARKING



IMPORTANT NOTICE: Residence images are artist conceptual renderings intended solely for illustrative purposes and may not accurately represent the details of this specific residence and should not be relied upon, nor do they create an agreement or commitment to deliver the residence in accordance with such illustrations. The specific orientation, views, window configurations, features, ceiling heights and design elements vary from unit to unit and are subject to change. Any square footages listed have been measured to the outside face of the exterior walls and are approximated based on architectural plans, not as built dimensions, and are subject to change. Interested parties are advised to inspect the full project plans and specifications, which contain all the design details of each home; they are available for review upon request. All residences are sold unfurnished - the furniture shown on the floor plan is not included in purchase price. Presented by O'Neill Stetina Group – Telluride Properties.