

## RESIDENCE

# 203

4 Bed, 4 Bath

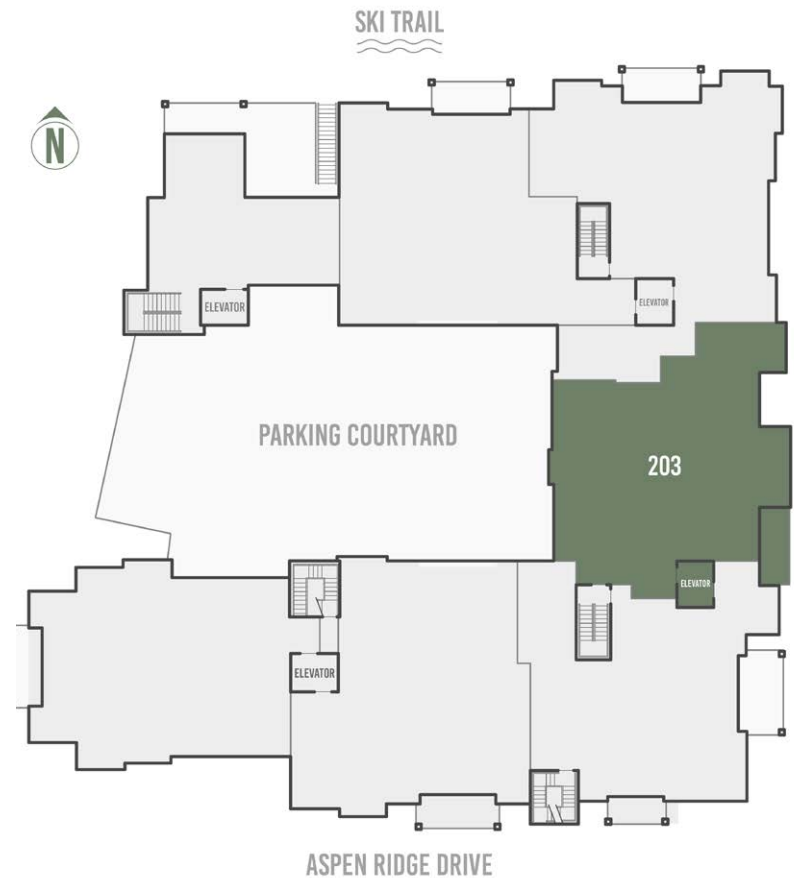
2,051 square feet

- East-facing unit with ski area view and hot tub balcony
- Tremendous floorplan optionality with bunkroom/office or 4th bedroom
- All bedrooms feature private ensuite bathrooms
- Single-level floorplan with direct elevator access
- Space Theory-designed custom kitchen
- Radiant in-floor heat, air conditioning and in-unit oxygenation systems



98 Aspen Ridge Drive, Mountain Village CO 81435

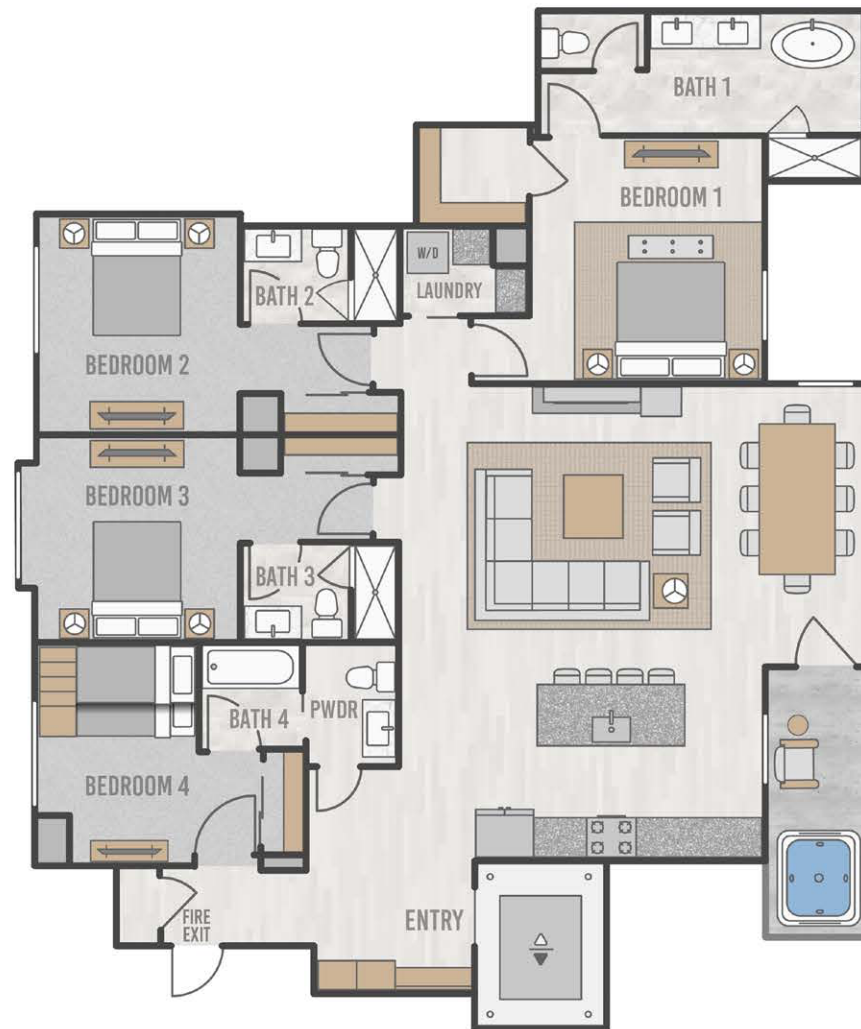
## FLOORPLATE



# RESIDENCE 203 FLOORPLAN



THE *Highline*  
RESIDENCES





# RESIDENCE 203



THE *Highline*  
RESIDENCES



## EAST ELEVATION



## RESIDENCE 203 PARKING



## RESIDENCE

# 204

3 Bed, 3 Bath

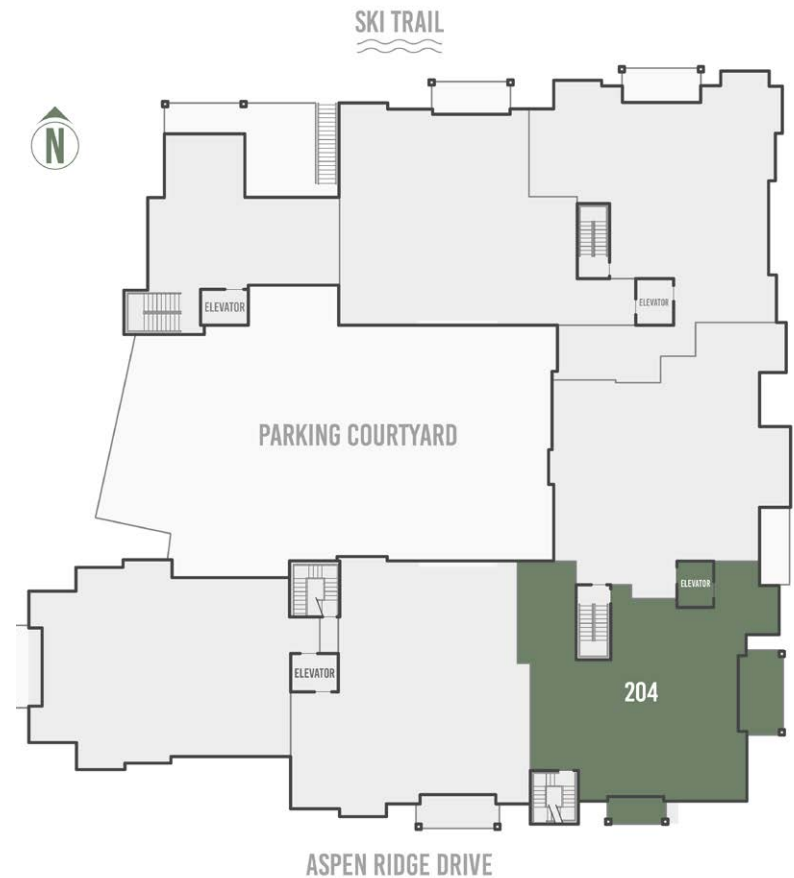
1,904 square feet

- Corner unit with panoramic views of Mountain Village, ski area and Palmyra Peak
- 3 bedrooms all with private ensuite bathrooms
- Indoor/outdoor livability directly from main living area and additional private balcony attached to the primary owner suite
- Sunny and spacious office/flex space
- Space Theory-designed custom kitchen
- Radiant in-floor heat, air conditioning and in-unit oxygenation systems

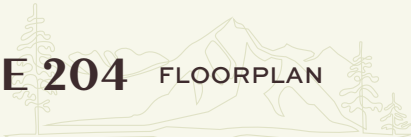


98 Aspen Ridge Drive, Mountain Village CO 81435

## FLOORPLATE



RESIDENCE 204 FLOORPLAN





# RESIDENCE 204



THE *Highline*  
RESIDENCES



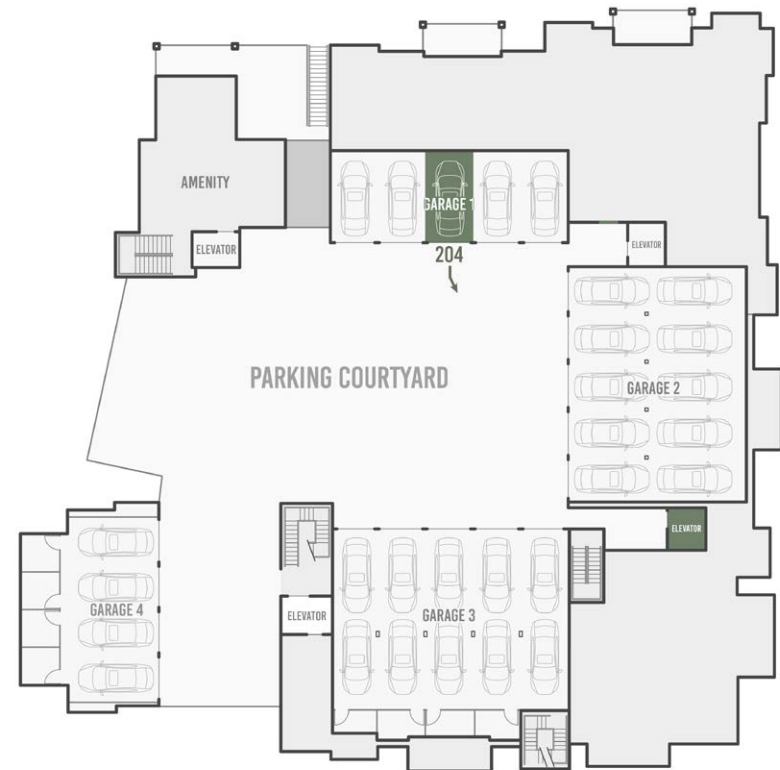
## EAST ELEVATION



## SOUTH ELEVATION



## RESIDENCE 204 PARKING



RESIDENCE

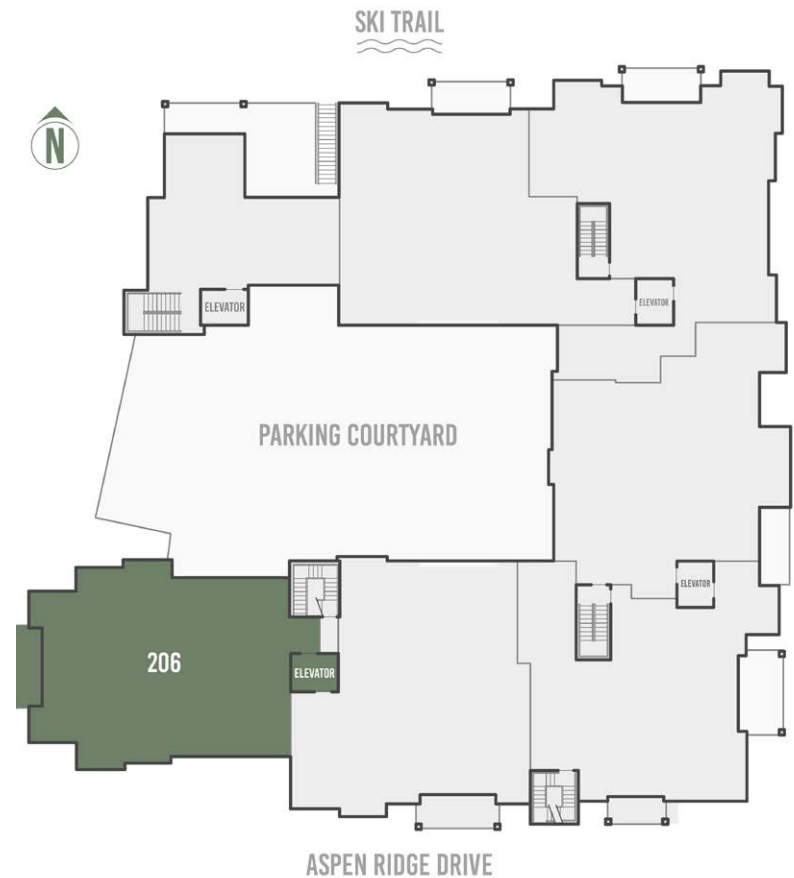
# 206

3 Bed, 3 Bath  
2,062 square feet

- Spacious, open floorplan with multiple bars and seating areas
- Premium primary suite with office nook
- 3 bedrooms with private, ensuite bathrooms
- Designed for the Telluride lifestyle with entry mudroom and spacious laundry
- Space Theory-designed custom kitchen and beverage center
- Radiant in-floor heat, air conditioning and in-unit oxygenation systems



FLOORPLATE



# RESIDENCE 206 FLOORPLAN



THE *Highline*  
RESIDENCES





# RESIDENCE 206

THE Highline  
RESIDENCES



## SOUTH ELEVATION



## RESIDENCE 206 PARKING



PENTHOUSE

# 302

5 Bed, 5 Bath

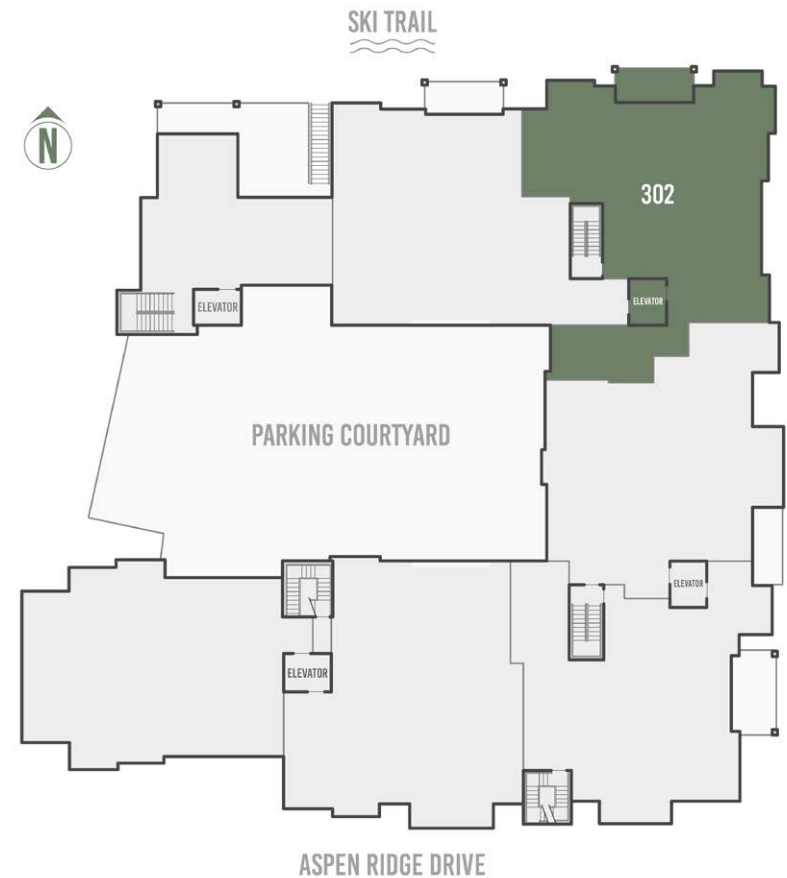
3,210 square feet

- Corner Penthouse with panoramic views of San Sophia Range to ski area
- Bi-level design with top-floor living spaces
- Secondary living area/family room with adjacent slopeside hot tub deck
- Premium primary suite with office nook
- Space Theory-designed custom kitchen and butler's pantry
- Radiant in-floor heat, air conditioning and in-unit oxygenation systems

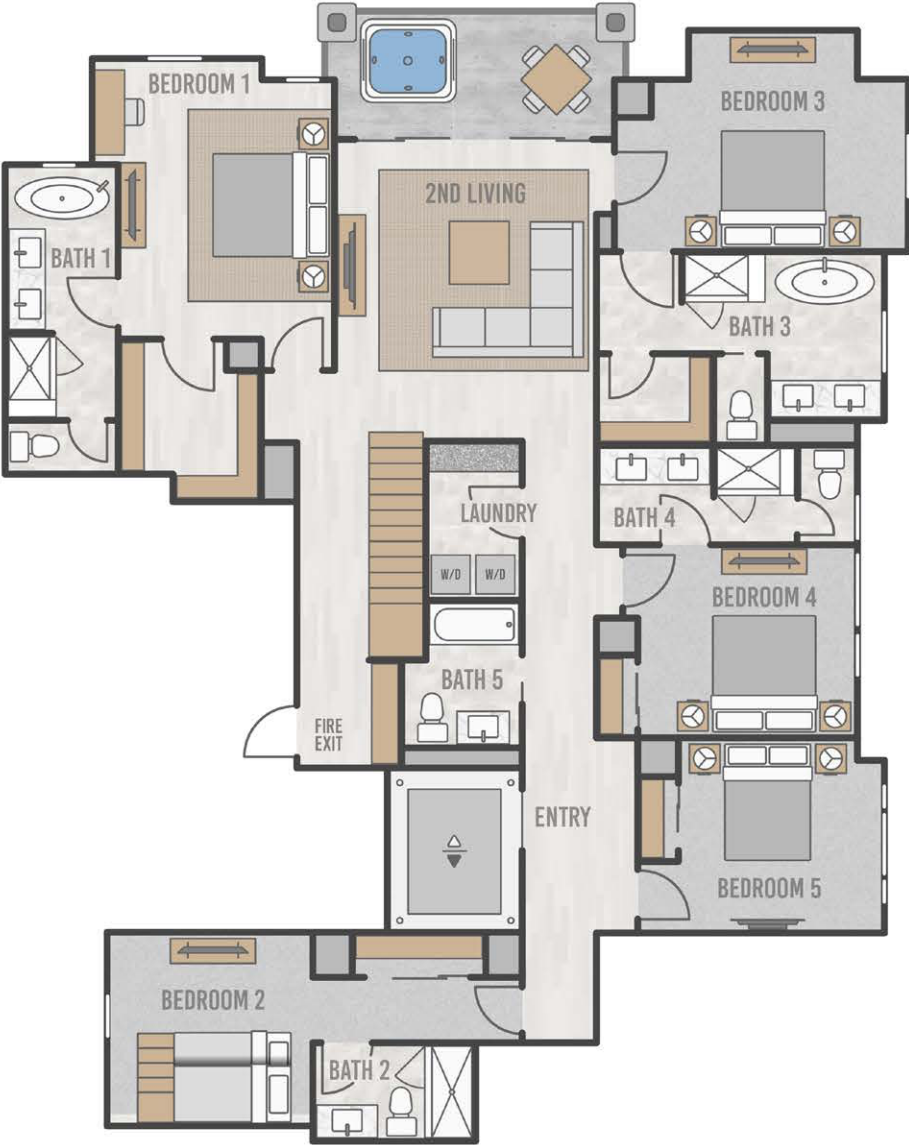


98 Aspen Ridge Drive, Mountain Village CO 81435

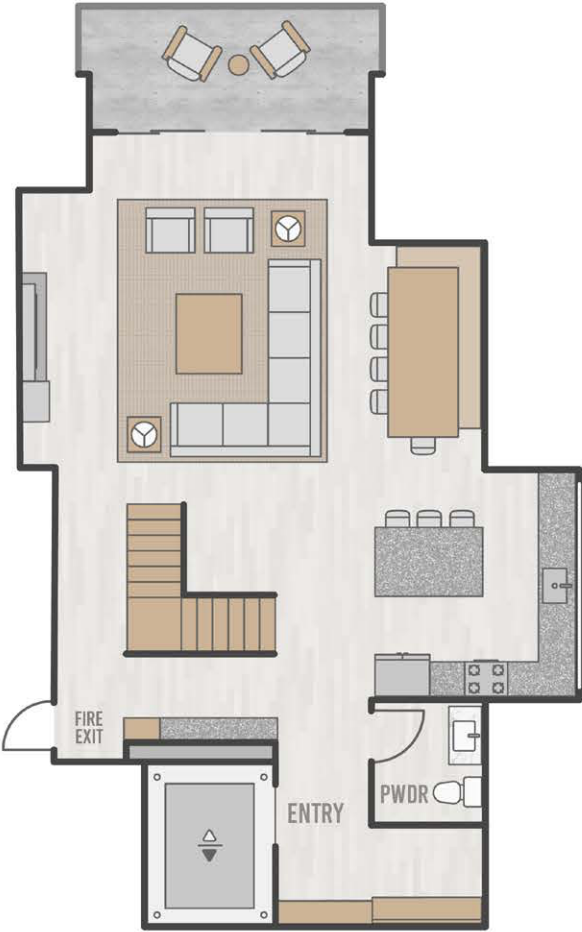
## FLOORPLATE



PENTHOUSE 302 FLOORPLAN



LOWER LEVEL



UPPER LEVEL



# PENTHOUSE 302

THE *Highline*  
RESIDENCES



## NORTH ELEVATION



## EAST ELEVATION



## PENTHOUSE 302 PARKING



## RESIDENCE

# 305

4 Bed, 4 Bath

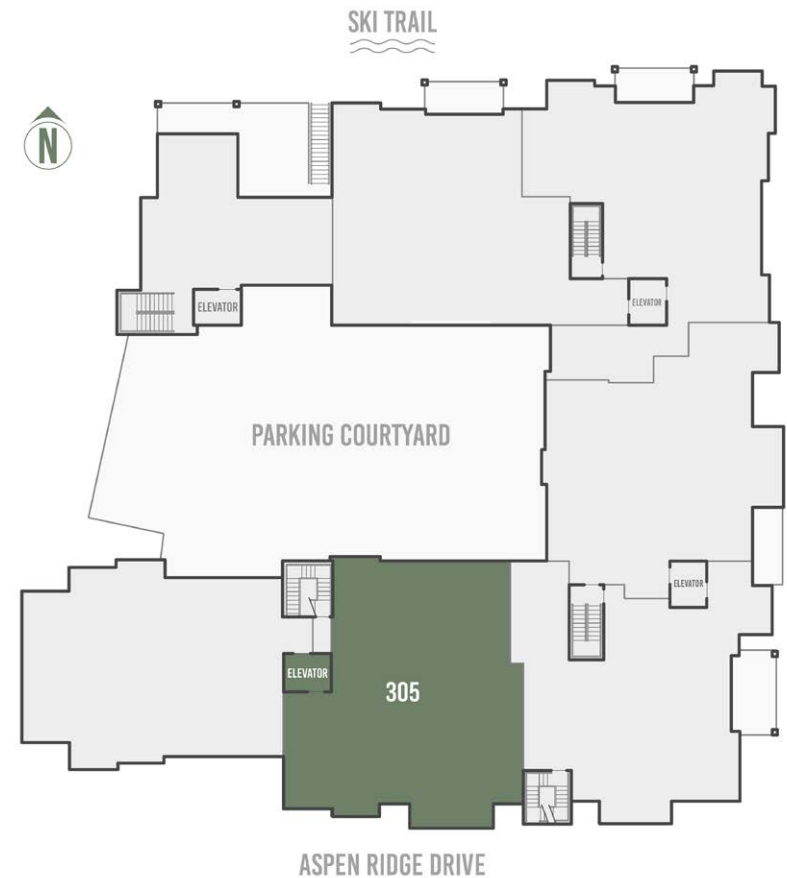
2,141 square feet

- Sunny, southern exposure with Palmyra Peak views
- 4 bedrooms with private, ensuite bathrooms
- Spacious primary bath with standalone tub and walk-in shower
- Urban mudroom design adjacent to stair and unit-direct elevator access
- Space Theory-designed custom kitchen
- Radiant in-floor heat, air conditioning and in-unit oxygenation systems



98 Aspen Ridge Drive, Mountain Village CO 81435

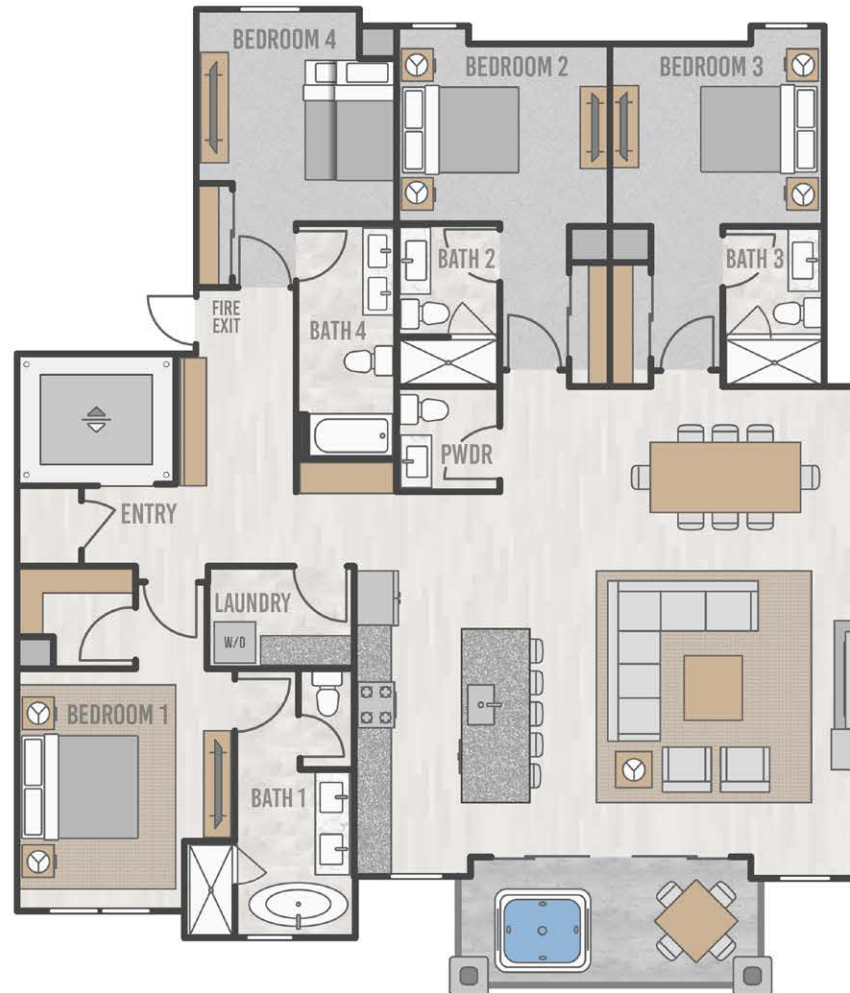
## FLOORPLATE



# RESIDENCE 305 FLOORPLAN



THE *Highline*  
RESIDENCES





# RESIDENCE 305



THE *Highline*  
RESIDENCES



## SOUTH ELEVATION



## RESIDENCE 305 PARKING



## PENTHOUSE

# 306

5 Bed, 5 Bath

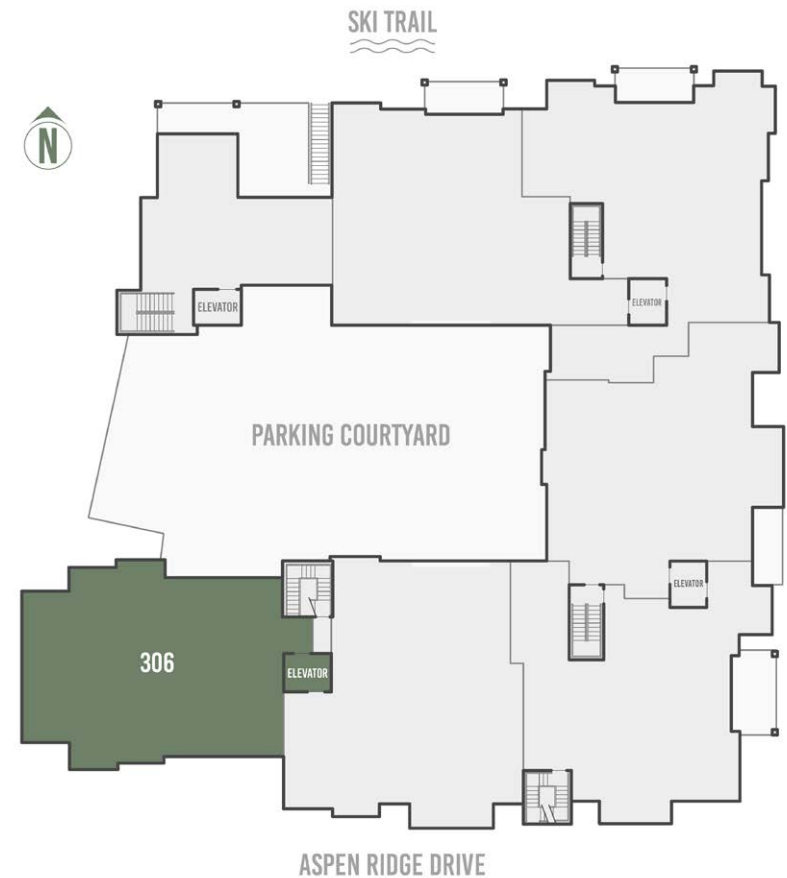
3,577 square feet

- 5-bedroom penthouse with tremendous S-SW-W exposures resulting in exceptional solar gain
- Panoramic views from Palmyra to Wilson to Lone Cone and the La Sals to the West
- Spacious main-floor living areas with additional living/family room on upper floor
- All 5 bedrooms feature private, ensuite bathrooms
- Space Theory-designed custom kitchen and beverage center
- Radiant in-floor heat, air conditioning and in-unit oxygenation systems

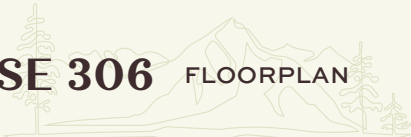


98 Aspen Ridge Drive, Mountain Village CO 81435

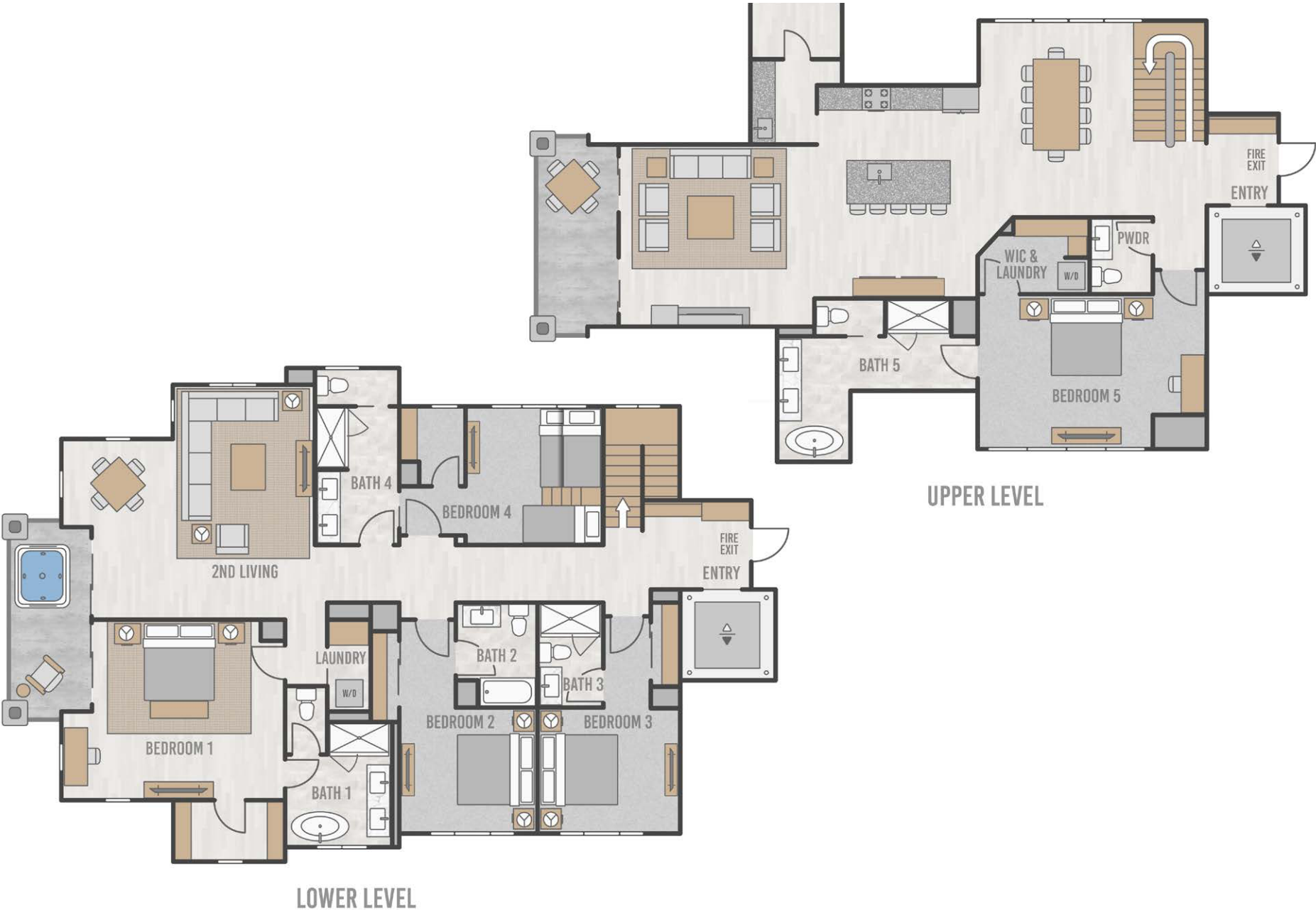
## FLOORPLATE



PENTHOUSE 306 FLOORPLAN



THE Highline  
RESIDENCES



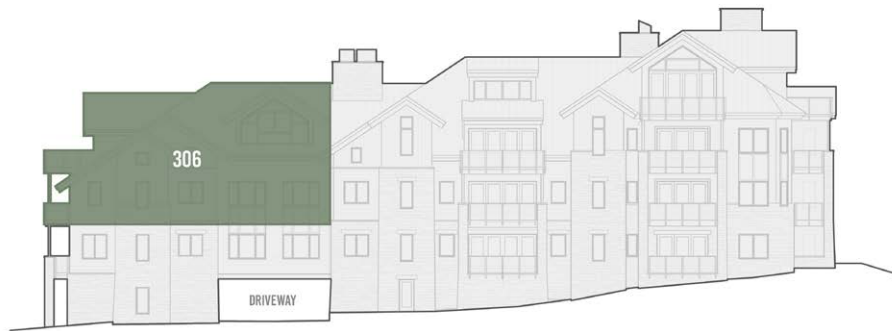


PENTHOUSE 306

THE Highline  
RESIDENCES



## SOUTH ELEVATION



## PENTHOUSE 306 PARKING



PENTHOUSE

# 404

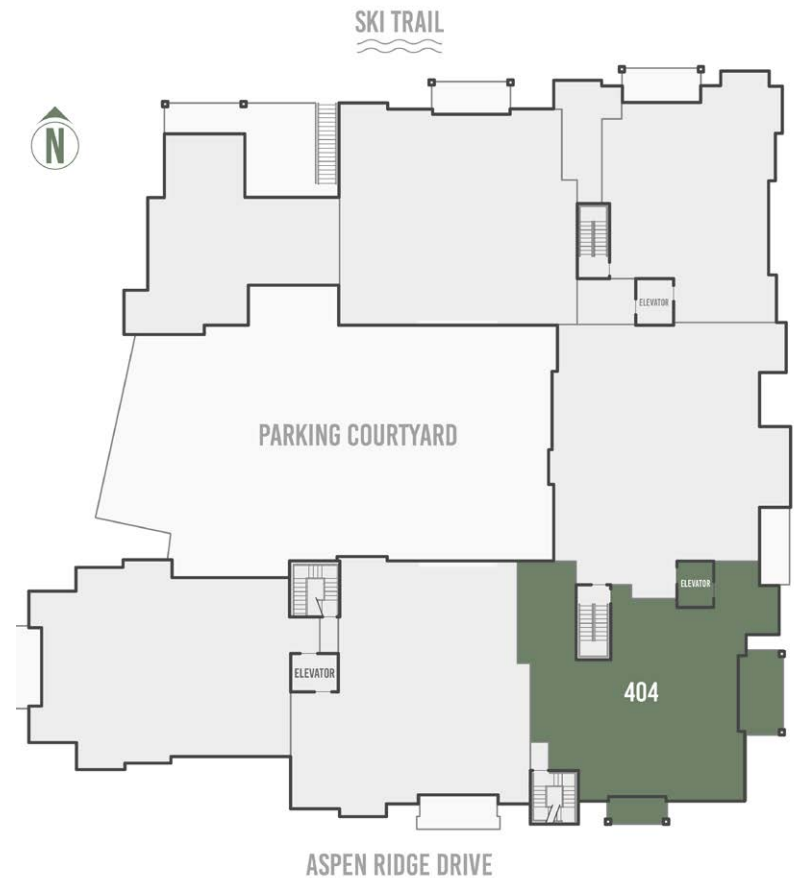
5 Bed, 5 Bath

2,957 square feet

- 5-bedroom corner penthouse with panoramic views from the San Sophia ridge, across Mountain Village and the Telluride Ski Resort to Palmyra Peak
- Top-floor living spaces enjoy unencumbered views and unfiltered sunshine
- Secondary living/family room with hot tub deck
- Sunny and spacious office adjacent to private elevator entrance
- Space Theory-designed custom kitchen and beverage center
- Radiant in-floor heat, air conditioning and in-unit oxygenation systems



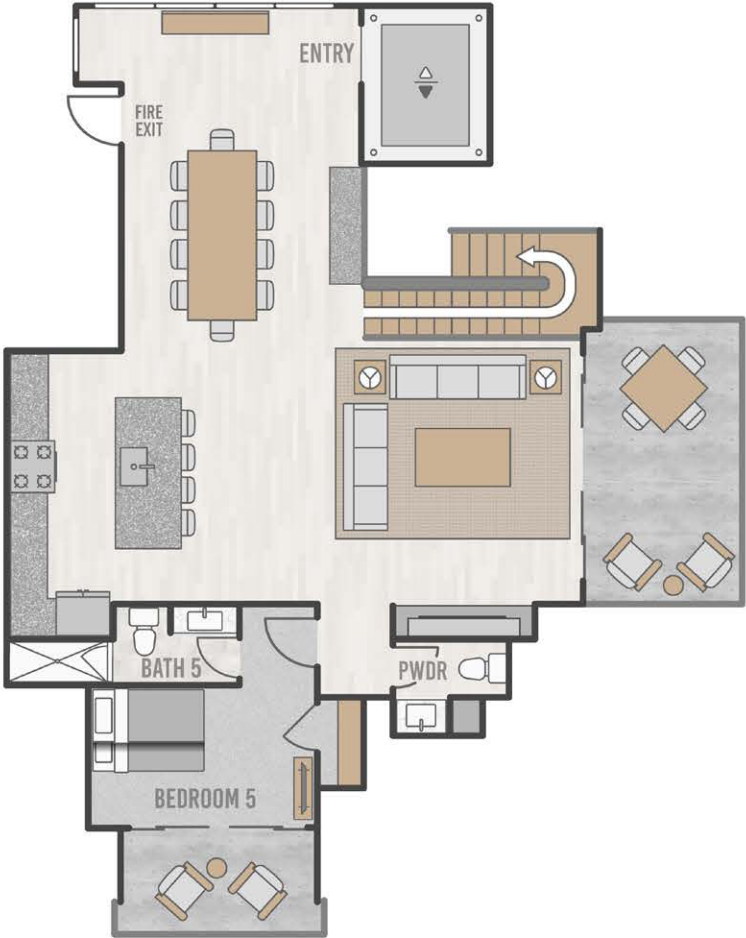
## FLOORPLATE



PENTHOUSE 404 FLOORPLAN



LOWER LEVEL



UPPER LEVEL



# PENTHOUSE 404



THE *Highline*  
RESIDENCES



## SOUTH ELEVATION



## PENTHOUSE 404 PARKING



PENTHOUSE

# 405

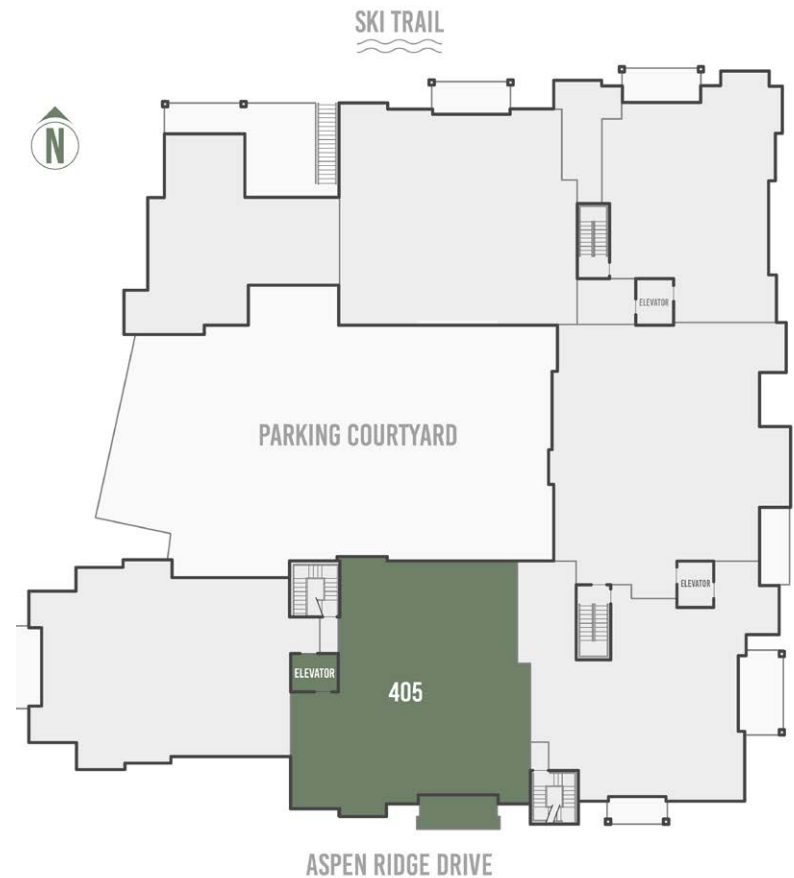
5 Bed, 5 Bath

2,685 square feet

- 5-bedroom penthouse with tremendous southern exposure and solar gain
- 5 bedrooms with private, ensuite bathrooms
- Dramatic and unencumbered views of Palmyra Peak, Gold Hill and the iconic Telluride Ski Resort
- Spacious and private top-floor primary suite with adjacent sitting room or office
- Space Theory-designed custom kitchen
- Radiant in-floor heat, air conditioning and in-unit oxygenation systems

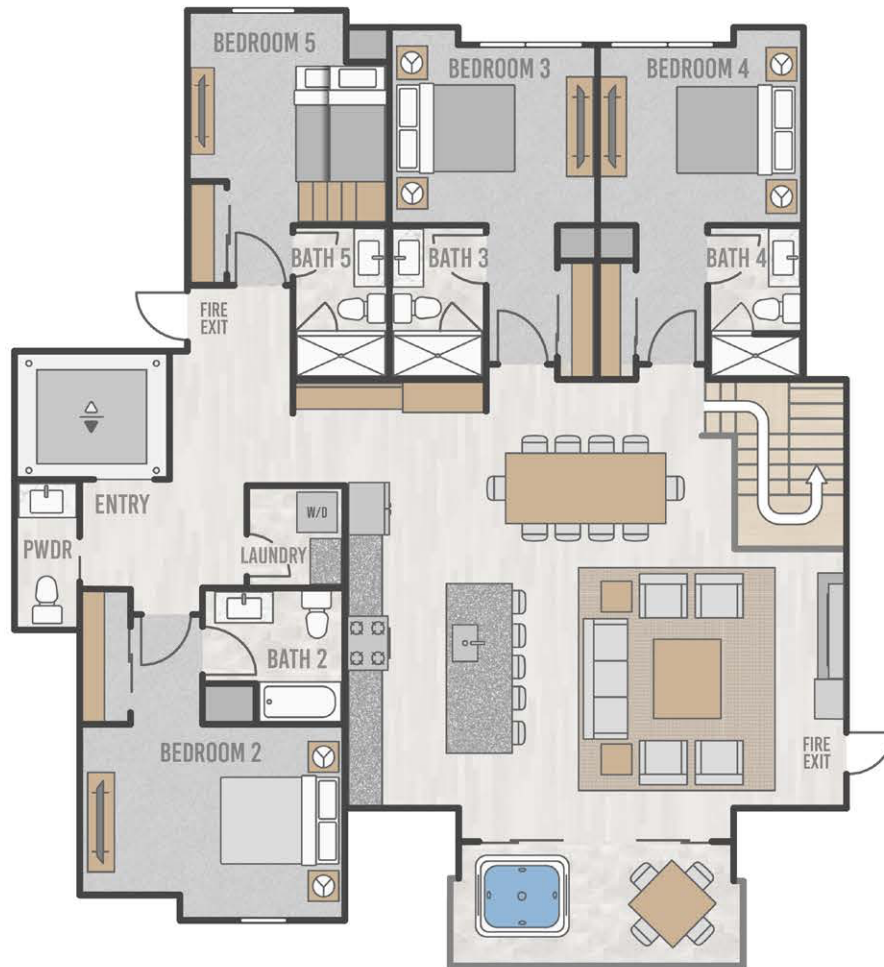


## FLOORPLATE

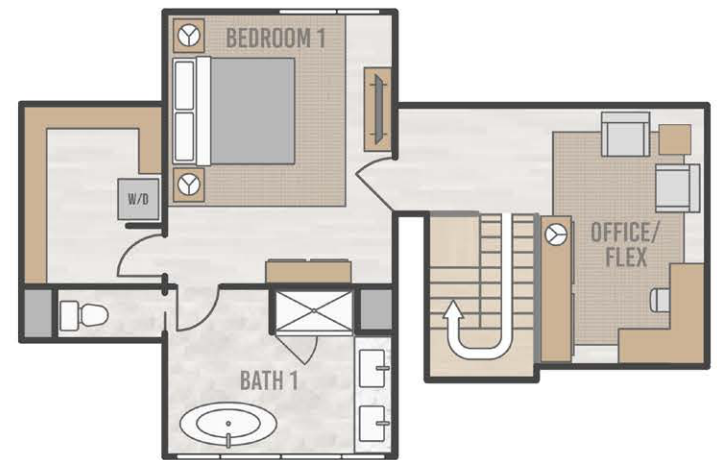


# PENTHOUSE 405 FLOORPLAN

THE *Highline*  
RESIDENCES



LOWER LEVEL



UPPER LEVEL



# PENTHOUSE 405

THE *Highline*  
RESIDENCES



## SOUTH ELEVATION



## PENTHOUSE 405 PARKING

