

PENTHOUSE

404

5 Bed, 5 Bath

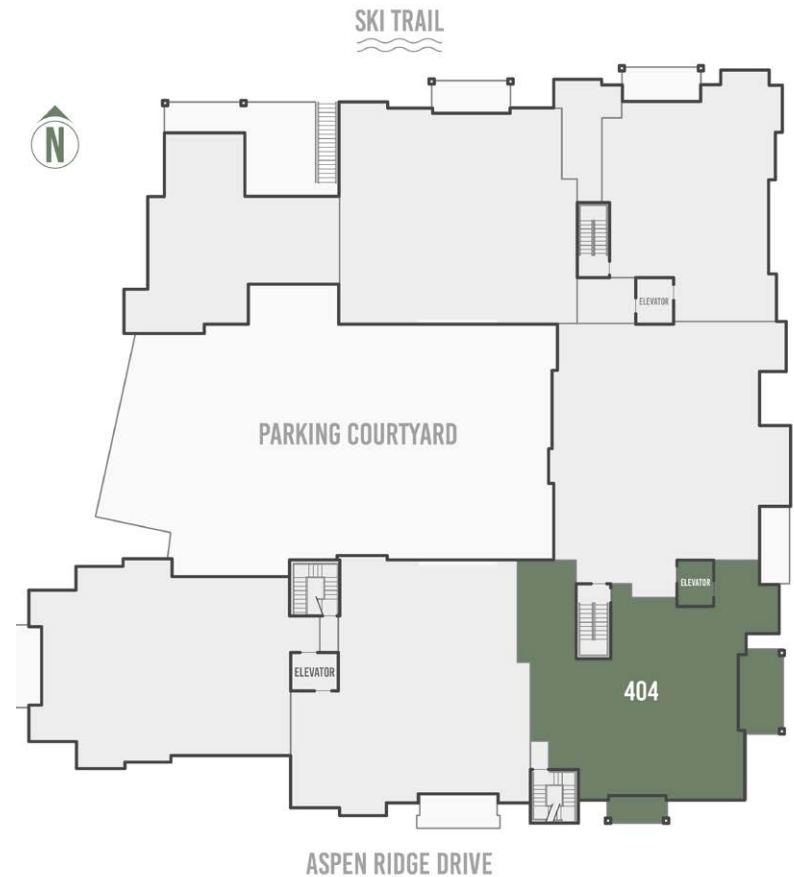
2,957 square feet

- 5-bedroom corner penthouse with panoramic views from the San Sophia ridge, across Mountain Village and the Telluride Ski Resort to Palmyra Peak
- Top-floor living spaces enjoy unencumbered views and unfiltered sunshine
- Secondary living/family room with hot tub deck
- Sunny and spacious office adjacent to private elevator entrance
- Space Theory-designed custom kitchen and beverage center
- Radiant in-floor heat, air conditioning and in-unit oxygenation systems

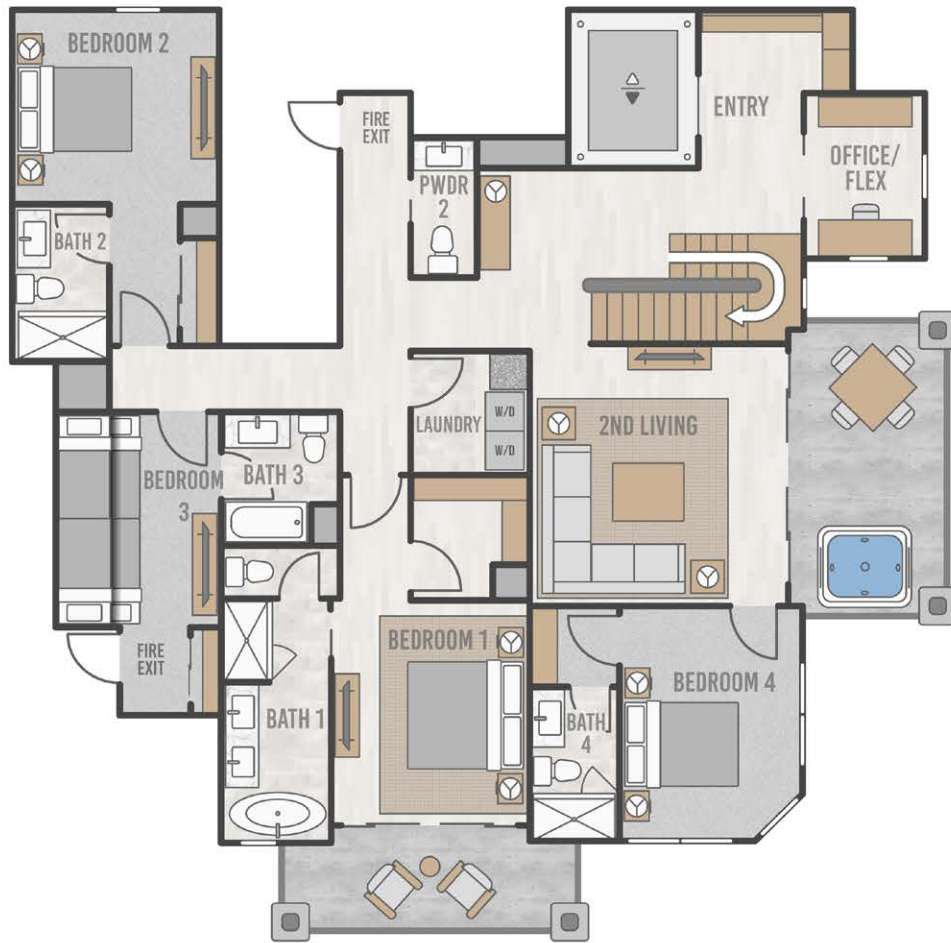


98 Aspen Ridge Drive, Mountain Village CO 81435

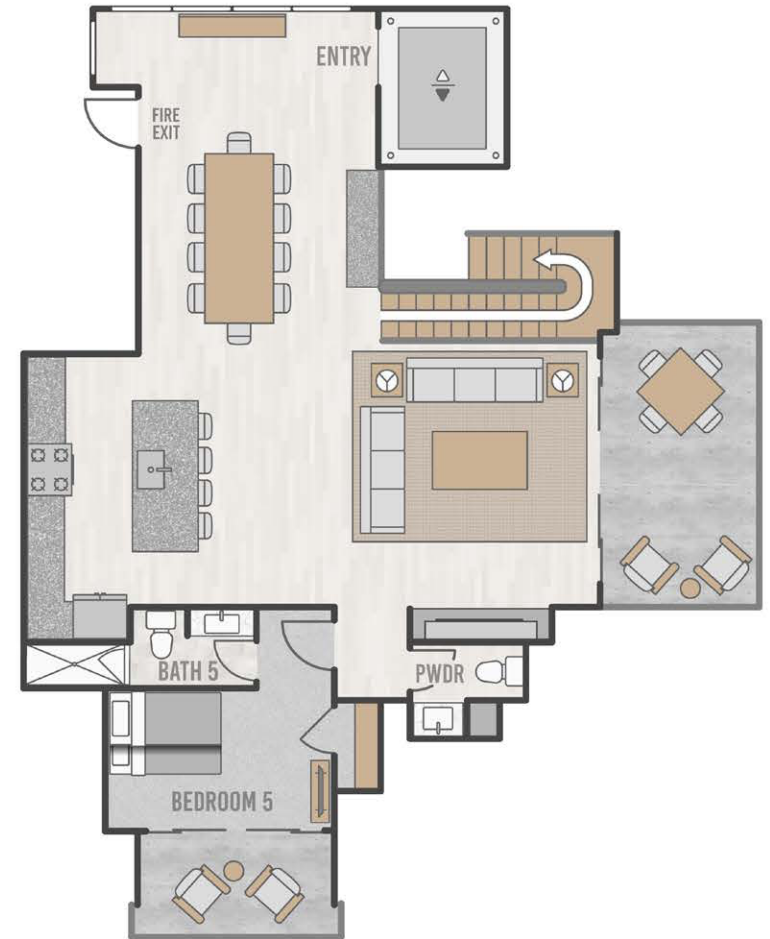
FLOORPLATE



PENTHOUSE 404 FLOORPLAN



LOWER LEVEL



UPPER LEVEL

PENTHOUSE 404



THE *Highline*
RESIDENCES



SOUTH ELEVATION



PENTHOUSE 404 PARKING



IMPORTANT NOTICE: Residence images are artist conceptual renderings intended solely for illustrative purposes and may not accurately represent the details of this specific residence and should not be relied upon, nor do they create an agreement or commitment to deliver the residence in accordance with such illustrations. The specific orientation, views, window configurations, features, ceiling heights and design elements vary from unit to unit and are subject to change. Any square footages listed have been measured to the outside face of the exterior walls and are approximated based on architectural plans, not as built dimensions, and are subject to change. Interested parties are advised to inspect the full project plans and specifications, which contain all the design details of each home; they are available for review upon request. All residences are sold unfurnished - the furniture shown on the floor plan is not included in purchase price. Presented by O'Neill Stetina Group – Telluride Properties.