

## RESIDENCE

# 203

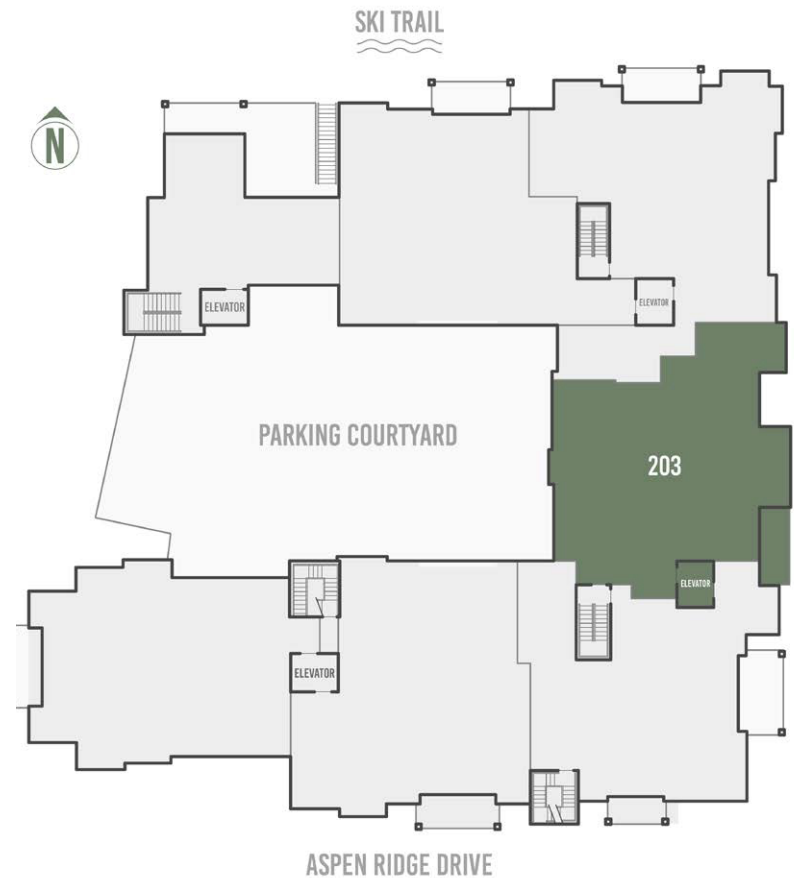
4 Bed, 4 Bath  
2,051 square feet

- Spacious garden-level 4-bedroom residence with ski area views
- Thoughtfully designed floorplan offering exceptional livability and privacy
- All bedrooms feature private ensuite bathrooms
- Single-level floorplan with direct elevator access
- Space Theory-designed custom kitchen
- Radiant in-floor heat and air conditioning
- Optional owner upgrade for in-unit oxygenation systems

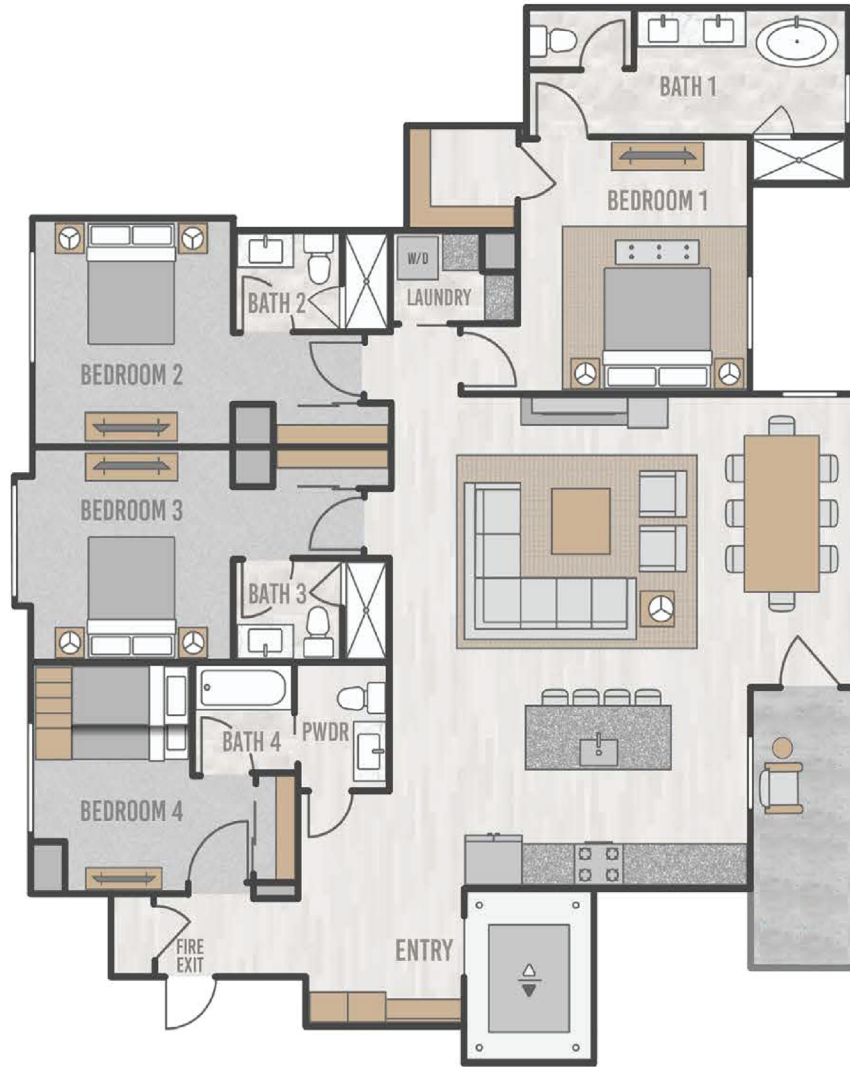


98 Aspen Ridge Drive, Mountain Village CO 81435

## FLOORPLATE



# RESIDENCE 203 FLOORPLAN



RESIDENCE 203



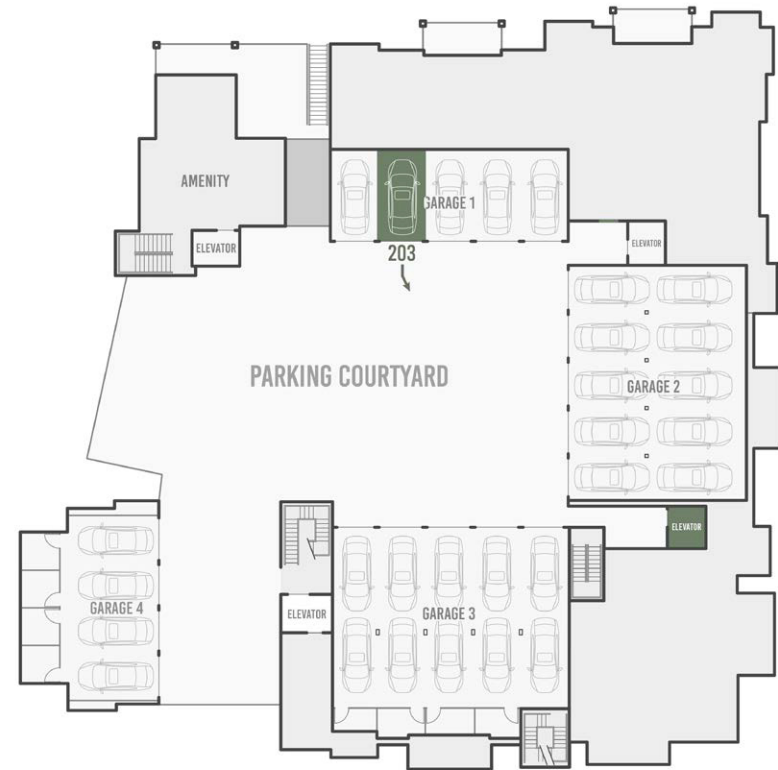
THE *Highline*  
RESIDENCES



## EAST ELEVATION



## RESIDENCE 203 PARKING



THE *Highline*  
RESIDENCES



TELLURIDE  
PROPERTIES  
On Top of Telluride

**IMPORTANT NOTICE:** Residence images are artist conceptual renderings intended solely for illustrative purposes and may not accurately represent the details of this specific residence and should not be relied upon, nor do they create an agreement or commitment to deliver the residence in accordance with such illustrations. The specific orientation, views, window configurations, features, ceiling heights and design elements vary from unit to unit and are subject to change. Any square footages listed have been measured to the outside face of the exterior walls and are approximated based on architectural plans, not as built dimensions, and are subject to change. Interested parties are advised to inspect the full project plans and specifications, which contain all the design details of each home; they are available for review upon request. All residences are sold unfurnished - the furniture shown on the floor plan is not included in purchase price. Presented by O'Neill Stetina Group - Telluride Properties.

PENTHOUSE

# 303

5 Bed, 5 Bath

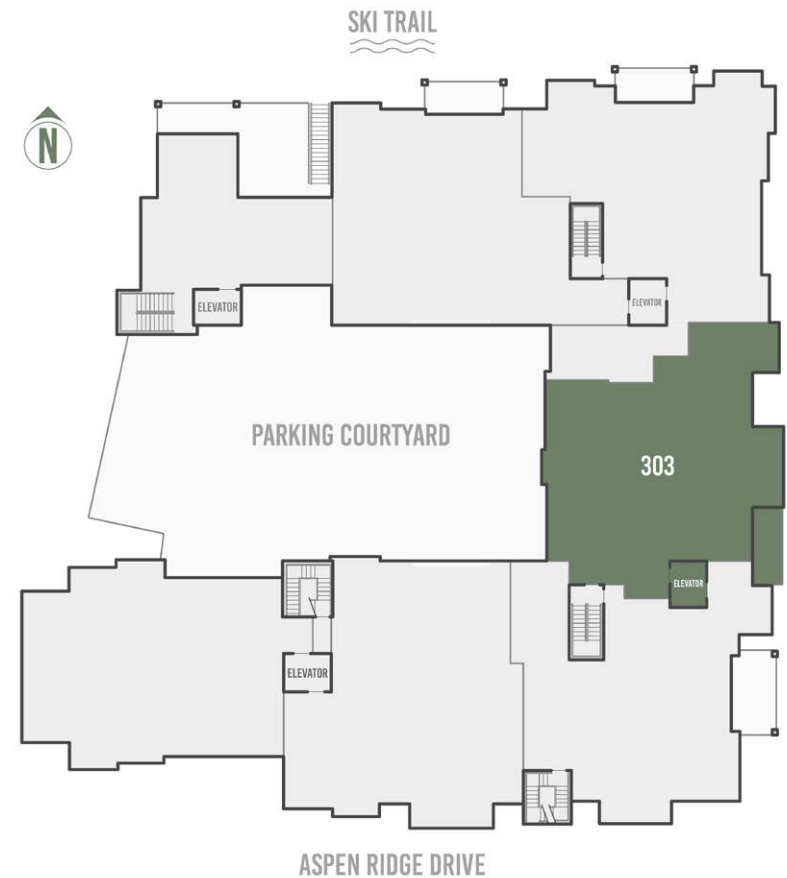
3,361 square feet

- Sunny top-floor office or 6th bedroom
- Penthouse with dramatic ski area and panoramic sunset views
- Bi-level design with top-floor living spaces
- Secondary living area/family room with adjacent hot tub deck
- Space Theory-designed custom kitchen
- Radiant in-floor heat and air conditioning
- Optional owner upgrade for in-unit oxygenation systems



98 Aspen Ridge Drive, Mountain Village CO 81435

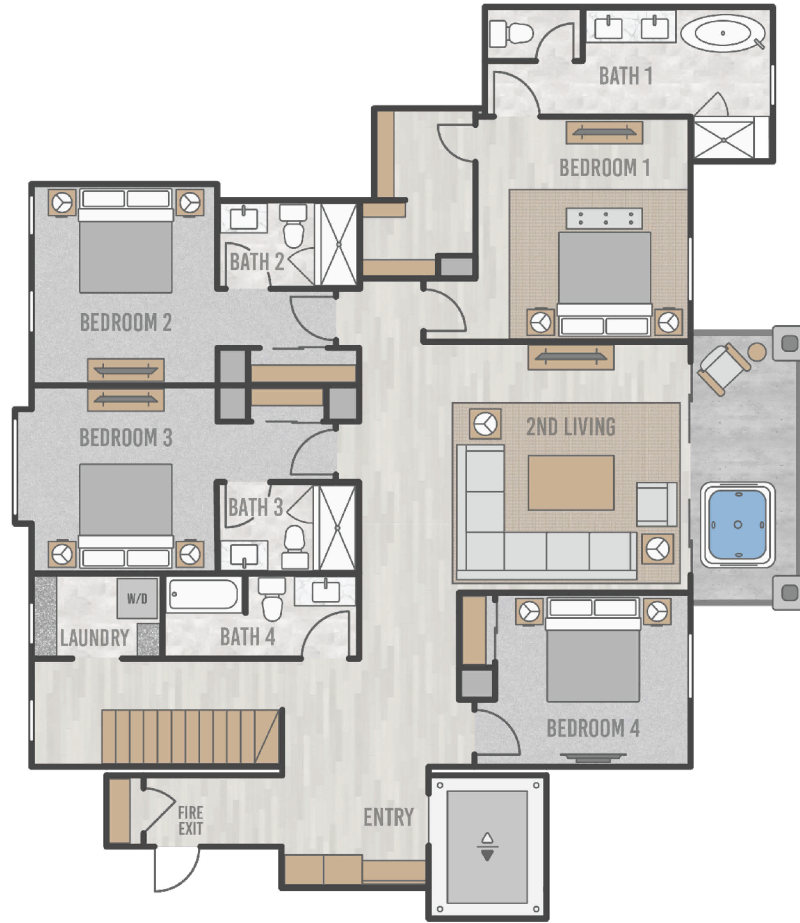
FLOORPLATE



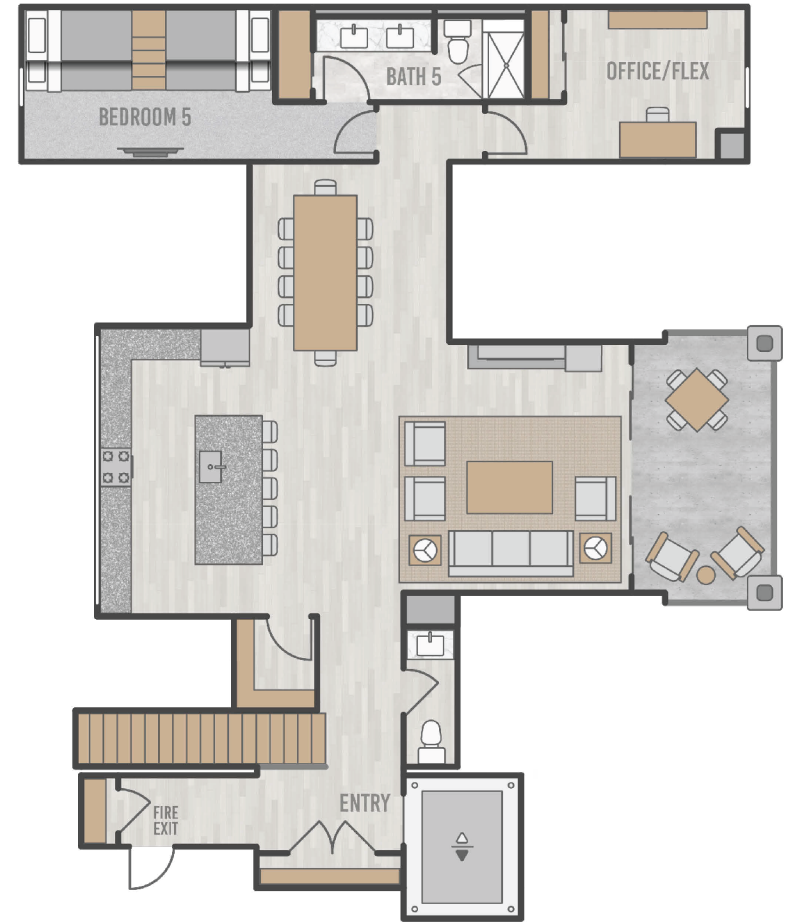
# PENTHOUSE 303 FLOORPLAN



THE *Highline*  
RESIDENCES



LOWER LEVEL



UPPER LEVEL

PENTHOUSE 303



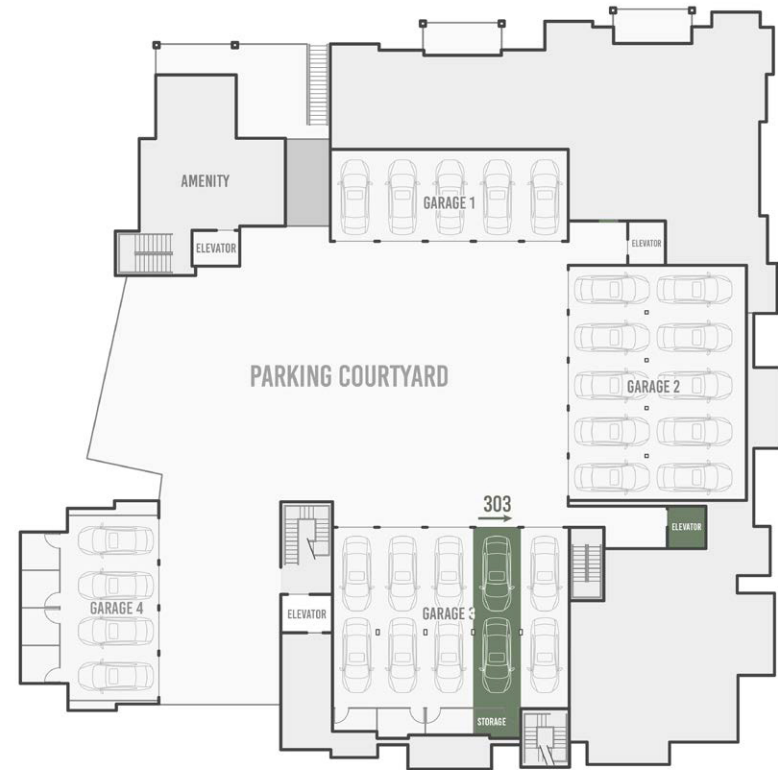
THE *Highline*  
RESIDENCES



## EAST ELEVATION



## PENTHOUSE 303 PARKING



THE *Highline*  
RESIDENCES



TELLURIDE  
PROPERTIES  
On Top of Telluride

**IMPORTANT NOTICE:** Residence images are artist conceptual renderings intended solely for illustrative purposes and may not accurately represent the details of this specific residence and should not be relied upon, nor do they create an agreement or commitment to deliver the residence in accordance with such illustrations. The specific orientation, views, window configurations, features, ceiling heights and design elements vary from unit to unit and are subject to change. Any square footages listed have been measured to the outside face of the exterior walls and are approximated based on architectural plans, not as built dimensions, and are subject to change. Interested parties are advised to inspect the full project plans and specifications, which contain all the design details of each home; they are available for review upon request. All residences are sold unfurnished - the furniture shown on the floor plan is not included in purchase price. Presented by O'Neil Stetina Group - Telluride Properties.